



THE POOH BAH

NEWS

Dear Pooh Bah Club subscribers,

Autumn is a great time to get busy in the garden while the conditions are right. Your garden is sure to be full of fallen leaves and spent summer growth which you can add to the compost bin.

More importantly, it's time to give the soil a boost. As the soil temperature increases over summer, moisture decreases and consequently slows down any microbiological activity in the soil. By applying an advanced biological formula rich in beneficial bacteria and fungi such as GOGO Juice or Seamungus, and mulching with a nutrient rich mulch like Whoflungdung, you are setting up your soil for a flourishing autumn with benefits that will continue well into winter and spring.

In this newsletter we feature an inspiring suburban gardener in Melbourne's southeast who has been trialling Human beans, the dahlias in bloom in the Adelaide Botanic Garden, recipient of a Global Footprints Scholarship, Tia Magner, and much more.

Stay in touch with Neutrog throughout the month via our social media pages. Our community holds a wealth of information, and our team are always happy to answer any product or garden queries you have.

Happy gardening!
The Neutrog Team

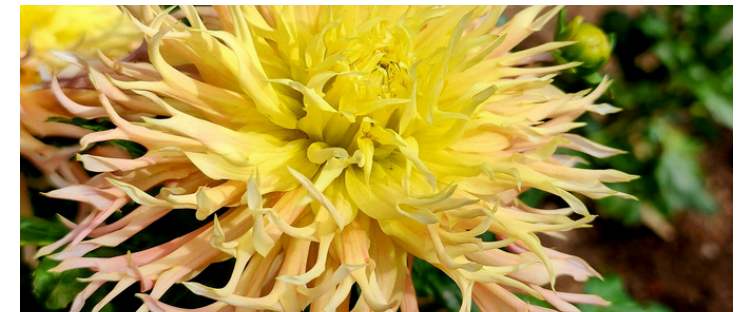
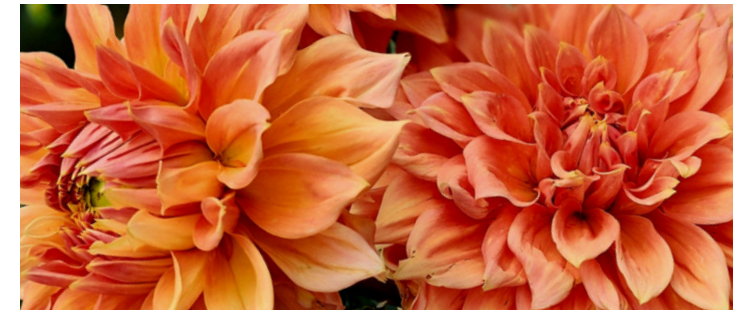


Photo of the Month

Suburban Gardening with Human Beans



These days, suburban backyards just don't offer the same amount of space that they used to, creating challenges for those who desire a garden to call their own. However, with some creative thinking and plenty of persistence, any space big or small can become a gardening sanctuary.

Caitlin and her French bulldog, Henry (pictured above) are based at a suburban property in Southeast Melbourne. Yard size has shown no bounds for Caitlin who has utilised every opportunity to create a productive garden full of fruits, vegetables and flowers, along with extra space for composting and worm farming.

Regenerative and sustainable gardening practices are used throughout Caitlin's garden, and it's this passion that inspired her to give Neutrog's Human Beans a try in various garden beds and potato bags.

Human Beans is a world first coffee fertiliser developed in partnership with [Foodbank](#) with the goal to recycle coffee waste. The pellets are coated with POPUL8, resulting in a nutritionally dense and microbiologically active fertiliser that feeds the plants while improving soil health. Each bag sold also provides two meals for people in need with Foodbank.

"I just thought this is a fabulous initiative. If I need to make a purchase, I'm always going to try and make it a sustainable or ethical one if I can," says Caitlin.

If you would like to stay up to date with Caitlin's journey or would like some inspiration for your next gardening project, you can follow her Instagram page by clicking [here](#).

About Human Beans

Human Beans is available exclusively from Bunnings in easy to manage 3kg recyclable paper bags.

Human Beans is an organic based fertiliser made from recycled coffee grounds, composted chicken manure and coated with over 242 beneficial, living bacteria and fungi (microbes) from POPUL8. Human Beans is perfect as an all-round fertiliser and is especially suited to growing vegetables, fruit and flowers, in garden beds, raised beds and pots.



Melbourne International Flower and Garden Show

With the Melbourne International Flower & Garden Show now in full swing, Neutrog's Helen Lovel and native plant expert, Angus Stewart have been exploring the grounds and meeting with designers and landscapers.

One such designer was Emmaline Brown, owner of STEM Landscape Architecture and Design who won the City of Melbourne Award of Excellence for Best in Show for her design "Through the Looking Glass". The garden is also a Gold Medal Winner - Show Garden and received the Horticultural Media Association Award for Best Use of Plant Life.

The focus of Emmaline's design focuses on the concept of habitat gardening. Featuring water features, rocks, fallen logs; interplanted with a mixture of indigenous and selected native plant cultivars, they come together to create a multidimensional garden.

When speaking with Helen and Angus, Emmaline noted that winning the Gold Medal means a lot to her, and the opportunity to uplift the profile of native flora and fauna is reward enough.

The garden was constructed by Liam Riley of ID Landscaping Design and Construction using plants supplied by Vaughan's Australian Plants who uses Seamungus across their nursery.

This garden is a beautiful example of utilising Australian plants to create a setting that feels like home while also benefitting the environment around it.



Laboratory Equipment



With plans for Neutrog's capital development in the Education and Research Centre progressing, our R&D team have begun sourcing equipment for the proposed Biological Containment Level 2 (BC2) laboratory.

This month they received a long-awaited delivery of equipment purchased at auction last year, with items including a Biobase large capacity shaking incubator and a PHCbi ultra-low temperature freezer.

The continual development of the capabilities of Neutrog's onsite laboratory reflects the growing scope of the R&D team, the projects being undertaken, and our commitment to ongoing R&D. We look forward to showing you more developments from the laboratory and the new equipment in action.

Product of the Month

GOGO Juice



Humans use probiotics every day to add good bacteria to the gut and maintain overall health... but what if you could do the same thing for your garden?

GOGO Juice does exactly that, but instead of maintaining a healthy gut, it provides necessary beneficial microbes to encourage a healthy, biologically active soil both in the ground and in pots.

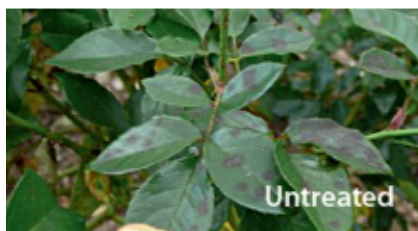
GOGO Juice was the first advanced biological liquid to be developed by Neutrog, and what was once brewed in a 20L home beer brewing kit is now produced in 10,000L batches alongside a growing range of concentrates including POPUL8, Seamungus, Sudden Impact for Roses, Strike Back for Orchids, and more recently, Bush Tucker and Sudden Impact for Lawns.

GOGO Juice inoculates your garden and pots with a wide range of beneficial bacteria and fungi which activate the natural processes that occur in the soil, speeding up the decomposition of the residual organic and mineral compounds, ultimately increasing the nutrient availability and stimulating growth.

The carefully selected microbes have been proliferated utilising complex carbohydrates and sugars through a unique aerobic brewing system in which the kelp, seaweed, humic acid and manure have been digested by the beneficial bacteria. The resultant product provides a huge boost of the living microbiology necessary for your soil and plants to perform at their optimum level, increasing their ability to resist pest and disease and to withstand heat and frost stress.

GOGO Juice was the first advanced biological liquid to be developed by Neutrog, and what was once brewed in a 20L home beer brewing kit is now produced in 10,000L batches alongside a growing range of concentrates including POPUL8, Seamungus, Sudden Impact for Roses, Strike Back for Orchids, and more recently, Bush Tucker and Sudden Impact for Lawns.

Now is an ideal time to try GOGO Juice to encourage a resilient soil ahead of winter. It can be used on your entire garden including vegetables, natives, and all potted plants in conjunction with your year-round fertilising program. It can also be added to the compost heap, adding the microbes needed to speed up the process!



The Expert's Choice

Edible Gardens by Craig Castree



Edible gardens have grown in popularity since store bought fruit and vegetable prices have increased, but for those who are new to growing their own produce, getting started can be trickier than anticipated.

Craig Castree (pictured above) is a qualified horticulturalist with over 40 years of experience growing his own food with a passion for using his knowledge and experience to assist others who are keen to give gardening a go. Based in Werribee in Victoria, he is also a key member of the Werribee Park Heritage Orchard. As Craig says, "If you are not producing what you are eating you are allowing someone else to decide what goes in your mouth."

Craig shares articles and general gardening advice daily on the Edible Gardens by Craig Castree website, and he recently shared an interesting piece about preparing your soil ahead of autumn planting, which he kindly allowed us to share with you.

"I thought I would spend a little time talking about what to do to the soil that you intend to plant seedlings or seeds into. The advice I once would have given you has changed quite a bit since my research into soil microbiology.

Turning soil over and working in manures and organic material is something that should be done at a very shallow level (no more than 50-75mm deep). Any deeper and you run the risk of chopping up the fungal network that is vital to good plant health.

In fact, I would go as far as to say that tilling soil even to a shallow depth can have some negative impact on the health of the microbiology. Did you know that in one tablespoon of soil there are more life forms in it than there are humans walking the planet? And each one has its own role to play in the soil. The last thing you want to do is to turn soil into dirt! When you understand that plants feed the microbes and the microbes feed the plants, turning soil over is a counterproductive thing to do, so how do we navigate from here?

If your soil is very poor and you know it needs some extra work, then hoe in some manure and organic matter down to a maximum depth of about 75mm. It is important that no matter what, soil is covered by mulch to a depth of no more than around 25mm. My favourite mulch at the moment is Whoflungdung from Neutrog. It is available at Nurseries and hardware stores, but please support your local Nurseries first.

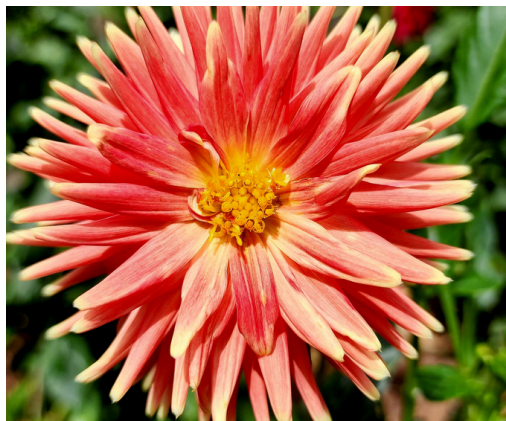
Using a weekly watering of a biostimulant like worm tea or Neutrog's GOGO Juice, or POPUL8 would all be good choices. Water it over your entire garden let alone where you intend to plant your new seedlings. This will stimulate the microbes.

Also, top dressing small amounts of sifted compost over your mulch and water in (with your biostimulant) would be great. This will bring worms up from the depths of your soil and help turn the compost you are dressing with into humus. Of course, in doing so the worms will aerate the soil in the process."

For more information about edible gardening, you can follow Craig's blog or purchase his books from his website using the button below.

R&D Partner

Dahlias in Bloom at the Adelaide Botanic Garden



Dahlia season is a beautiful time of year with garden displays blooming with bright balls of colour, including in the Dahlia Garden at the Adelaide Botanic Garden which put on a floriferous display with help from The Dahlia Society of South Australia Inc.

Healthy soil is key to achieving such a display of strong blooms with dahlias being susceptible to mosaic viral diseases that are transmitted between sap sucking insects resulting in yellowing, spotting and deformation of the leaves. In the past this has been a known issue in the dahlia beds at the Adelaide Botanic Garden.

“Once a dahlia has the virus there is not getting rid of it, no matter what you do,” says Andy Hart, Botanic Gardens and State Herbarium Senior Horticultural Curator.

“What you can do though, with good horticultural and cultural practices, is have a dahlia plant growing as happy and as healthy as possible, which will help combat the virus and lessen its effects. A stressed and unhealthy plant will show the effects of dahlia mosaic virus a lot more than a healthy, vigorous plant.

“Whoflungdung is part of our good practices to have happy and healthy plants.”





Plant impacted by downy mildew.



Rose infected with Botrytis.

A New South Wales professional rose grower, approached us a couple of months ago, to discuss what support we could offer in treating pests and fungal diseases in his crops. In addition to pest and disease, his crop was also showing significant signs of heat stress, which was affecting overall plant health and yield.

Having had previous success with using POPUL8 as a soil treatment, his question to us related to what options were there for a foliar application, and coincidentally a product that is currently under development, called CHECKM8, was ready for trial.

The grower held off any fungicide applications for 1-2 weeks prior to the application (to ensure no lingering residue could impact the microbes) and then applied at a rate of 1-2ml checkm8 per litre of water . After 1 week, he reported that “the “whole crop is showing signs of recovery from heat stress, good recovery growth and a reduction in fungal pressure in the areas that were treated” with CHECKM8.

Further, “We are having good results with the control of fungal diseases in the rose cultivation, using trial beneficial bacteria (CHECKM8), we are now looking at using this approach on a permanent basis. It has allowed us to adopt the use of integrated pest management for the pest control and reduce the need for heavy pesticides.”

Knowing that this problem is not unique to commercial flower growing, the grower pointed out, “For home gardeners facing the same issues, soil balance has to be resolved first, then POPUL8 directly onto the soil, followed by CHECKM8 a foliar. Without the previous steps, CHECKM8 may not have the same impact. For roses, high potassium will cause an issue if used to long (nutrient antagonism) and can cause growth in the fungal problem – hence use high potassium products sparingly when fungal disease is present”.



Plant impacted by downy mildew which has been treated with CHECKM8.



Botrytis infected roses that have been successfully treated with CHECKM8.



CHECKM8 treated rose now Botrytis free.

Global Footprints Scholarship

Tia Magner



We would like to introduce you to Tia Magner, who is the recipient of a BBM Youth Travel Scholarship for 2024.

Tia grew up on a merino farm and for the last three years has been working gaining knowledge through the combination of work and studying for her Certificate 3 in Horticulture. At Mole Station Native Nursery, Tia works growing thousands of trays of native Australian shrubs and trees for revegetation, by farmers, Landcare and largescale landscaping.

When applying for the scholarship Tia said, "I am keen to investigate both horticulture and agriculture, and I believe that we need better methods to create a sustainable future in both. I am interested in practices that avoid man-made fertilisers on crops, for the health of the soil and sustainable irrigation systems. I would also like to learn alternative propagation techniques, particularly orchid propagation and grafting of fruit trees."

Her background in farming also influenced her objectives, "My family have been a major inspiration for my lifelong goals, using regenerative practices on our property such as green manure crops and nitrogen fixing methods to ensure the land will be healthy for many generations to come," Tia says.

Working alongside Graham Ross, from The Garden Clinic in his capacity as Chair of The Australian Garden Council, Tia secured placements in 2024 that will offer her unparalleled gardening and ornamental horticulture experiences in the United Kingdom.

Tia will be working with David Austin Roses and The Eden Project, Cornwall. Apart from both being global leaders in environmental horticulture both these organisations run plant propagation / production facilities, extensive garden design and maintenance programs, and interaction with the general public in retail customer relations. The former GM of The Eden Project, Dave Harland, is the new CEO of the Royal Botanic Gardens, Victoria.

Access to David Austin Roses is very limited and Tia has secured a longer-term placement where she will complete a very formal intern training program and work on their multi-gold medal winning display at the RHS Chelsea Flower Show. Both the nursery and the event are world leaders in horticulture and will provide Tia with a very complex range of experiences.

These scholarships, facilitated by the Australian Garden Council and supported by partner organisations (such as Neutrog), are an exciting way to support young Australians looking to establish a career in gardening, horticulture and agriculture.

We look forward to hearing how Tia progresses throughout her year.

Rare Fruit Arboretum

General Update



After a wonder through the Rare Fruit arboretum in Kanmantoo last month, we couldn't help but notice the progress of the fruit tree varieties added in 2022, including mulberries, raspberries and grapes.

You may remember from previous newsletters that cuttings from a rather special mulberry tree were obtained by the Rare Fruit Society of South Australia (RFSSA) and added to the arboretum. The story goes that the first European settlement established on Kangaroo Island in 1836, and during their settlement they planted mulberry trees. The cuttings that were added to the arboretum are from the only remaining tree from those plantings 188 years ago.

Two cuttings were propagated and planted into the arboretum in the middle of 2022, and one and a half years on, one of those plants has established wonderfully. The tree is reaching new heights and is covered with large, deep green leaves. Sadly, the second plant hasn't progressed.

Another new addition from 2022 that seems to be flourishing are the raspberries, including a rare variety called 'Lloyd George'. A look through the vast, freely spreading foliage showed evidence of fruit for the first time since being added to the plot.

Canada Muscat, Cardinal and Menindee Seedless are just a few of the grape varieties added in 2022. With good care (and a lot of patience) a healthy grape vine will produce fruit three years after planting, so we hope to have a 'fruitful' update for you next year!

Finally, the fig trees are producing well, with some of the trees having been netted to assist the RFSSA with accurately identifying the tree varieties. There are also signs of pomegranates beginning to fruit as well, giving us something sweet to look forward to over the coming months.

All fruit trees in the Rare Fruit Arboretum have been fed with Gyganic for Veggies, Fruit & Citrus and watered with GOGO Juice to enhance fruit size, quality and taste while stimulating microbial activity in the soil.





Year round fertilising for year round health



We hope you enjoyed reading this newsletter. If you'd like to stay in touch with Neutrog, we encourage you to like and follow our Facebook and Instagram pages using the links below, and tune into Neutrog TV (hosted by YouTube) where you can find a range of videos as well as copies of Dr Uwe's weekly chats with Graham Ross.

See you in May!
The Neutrog Team

Our Partners

Over the years Neutrog has collaborated with many plant societies that have trialled and subsequently endorsed some of our products. These product endorsements provide retail staff and home gardeners with the confidence to use and recommend Neutrog products.

With a combined membership base of over 10,000, some of these endorsing societies include:



We never have enough room in our newsletters to share all of our inspirational stories and tips from our gardening community, but they do appear on our Facebook and Instagram pages regularly...why not join us there?

