



# The Pooh Bah News



**Dear Pooh Bah Club subscribers,**

Spring has certainly not disappointed this year, with fresh perfume and blooms making for a spectacular scene. Soon we'll transition into what is predicted to be a long and hot summer, which means preparation in the garden now will be the key to ensuring your plants can withstand the challenging conditions.

Gardeners will need to keep an eye out for heat stress in all areas of the garden. Applying products rich in seaweed and organic matter like Seamungus and GOGO Juice around your plants now will help to increase the water holding capacity of the soil and improve the plants' ability to tolerate hot weather. Mulch with Whoflungdung to provide a protective layer for your soil and to keep the temperature regulated.

In this newsletter we have some exciting announcements, including an introduction to our newest product, BIOMETRI8. We also hear from the Wildlife Art Museum of Australia, Coogee Community Garden, Sgorra Bhreac Garden in Strathalbyn and more.

As always, we encourage you to visit our social media pages for more news and stories throughout the month. Our community holds a wealth of information, and our team are also happy to answer any product or garden queries you have.

**Happy gardening!  
The Neutrog Team**



# Photo of the Month

## Blooming Success with Strike Back for Orchids



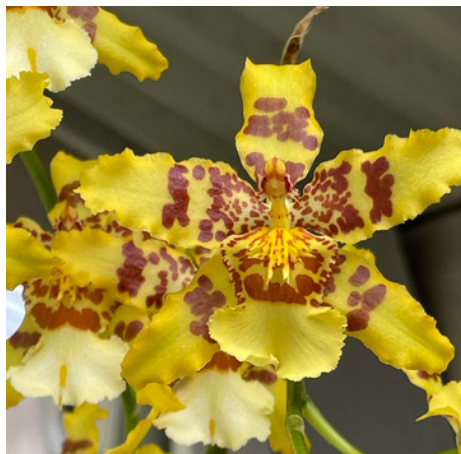
Orchids are popular plants and for good reason – they flower for long periods, make great gifts and come in a huge range of varieties and colours. Ann Lee recently sent in these photos of her orchids, which made the perfect fit for our photo of the month!

The largest plant in her collection is a cymbidium orchid with over 30 spikes and counting. Ann tells us, "This is my baby. It's tucked in a corner, and we can't move it as it's too big and the cockatoos would rip it apart."

Among a colourful variety of orchids, we couldn't help but notice her fantastic display of upside-down orchids, otherwise known as 'Stanhopea tigrina'. These orchids are known for their strong and sweet fragrances resembling that of chocolate or vanilla.

**"I have five different colours. They grow under my back veranda, when they open the back yard smells like a bottle of vanilla essence. I have a baby chocolate one and hoping it flowers this year."**

Each of these orchids have been fed with Strike Back for orchids, which Ann has been using for the last few years to encourage strong and healthy sets of flowers. Orchids thrive with proper nutrition, so it's no surprise to us that these orchids are performing at their best!



### About Strike Back for Orchids

Strike Back for Orchids is endorsed by orchid clubs around Australia, and supplies a full range of nutrients developed to enhance the growth and flower development of orchids.

Organically based and chemically boosted, Strike Back for Orchids is available in both pellet and as a liquid Advanced Biological Formula.





# Site News

## What is happening at Neutrog?



### BIOMETRI8 — New Product Trials Commence

**We are beyond excited to announce that a new product, our most technologically advanced to date, has moved out of the laboratory to now commence garden trials.**

The culmination of nearly 17 years of ongoing R&D, BIOMETRI8™ (“by-oh-mee-tree-ate”) is the Ultimate Probiotic designed to prevent, protect and revive plants through the beneficial characteristics of over 120+ individual microbial strains.

Each of these microbes have been isolated and identified by the Neutrog R&D team, from soil samples collected from all around Australia.

By creating that level of microbe diversity, BIOMETRI8 is over 2.5 x POPUL8.

BIOMETRI8 also marks a significant milestone as our first release of a biological soil and plant product, contained in an easy-to-use, dissolvable capsule.

By utilising freeze-dry technology, each BIOMETRI8 capsule delivers a highly concentrated dose of billions of microbes in an efficient, sustainable format.

We can't wait to share the journey to our planned BIOMETRI8 launch in 2024.



### Treloar Roses Bloom at the 2023 Rose Trial Garden Awards

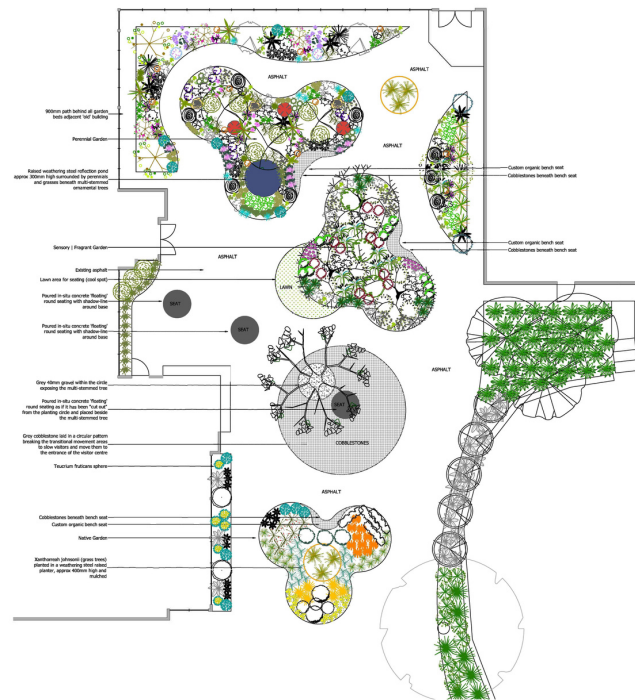
**Passionate rosarians, rose breeders, sponsors and associated organisations of the National Rose Trial Garden of Australia gathered for the annual Rose Trial Garden Awards, and what a night it was for the representatives of Treloar Roses.**

First started by Ted Treloar in the 1960s in Portland, Victoria, the company was represented on the night by Lauren Mallen (Marketing Manager) and Elton Treloar (Manager) who received seven bronze medals, one silver medal and one gold medal.

In addition to the Medals, Treloar Roses also received the Gerald Meylan Perpetual Trophy for best Shrub or Ground Cover for ‘Corazon’, the Hamilton Gardens NZ Perpetual Award for Best Hybrid Tea Rose with ‘Spicy Perfuma’, also the Jamie Irwin Award for the Most Pest and Disease Resistant Rose for Bed 69 (a rose unnamed at present), the Governor of Gifu Award for The Most Fragrant Rose of the Trial for ‘Spicy Perfuma’, and Rose Hills Perpetual Challenge Bowl for Best Floribunda Rose ‘Fur Elise’, and finally Marion de Boehme Memorial Award for Best Rose of the Trial awarded for ‘Fur Elise’ and named Australia’s Rose of the Year.

# Site News

## Education & Research Centre Update



**Plans for Neutrog's Education and Research Centre are in, and so too are the plans for the adjacent garden area which has been designed by Cathy Apps from Catnik Design Studio.**

Cathy has previously provided her expertise in landscape and garden design across various beautification projects at Neutrog's Kanmantoo factory, and we are thrilled to have her back again for this exciting new project.

What is currently a bitumen carpark will soon become a flourishing sensory garden which will serve as an inviting entrance to both the Education and Research Centre and Head Office buildings.

"The curved nature of the design reflects seed pods and planting zones. Each planting zone targets specific senses, and every aspect of the planting has been included for sensory stimulation," says Cathy.

"There is a diverse colour palette and plant section to encourage wildlife and provide a peaceful, tranquil haven to be enjoyed by a diverse gardening community."

The plan currently includes a total of 663 plants of 72 varieties. *Xanthorrhoea johnsonii*, *Buddleja davidii* 'Buzz Magenta', *Geranium* 'Rozanne', *Anigozanthos*, *Parrotia persica* and *Amelanchier lamarckii* are just a few of the plants that will form the perennial garden, sensory/fragrant garden and a native garden.

Circular patterned cobblestones will be added throughout the garden to provide water drainage along with a weathering steel reflection pond and seating made out of organic materials.

Visitors to our site are, more often than not, passionate gardeners and Cathy's design is a "gardeners garden" as opposed to more conventional commercial landscape design.

Creating an unexpected greenscape, that thoughtfully responds to the seasons, has movement, water and a plant selection that attracts birds, bees, butterflies will enhance this exciting new development.

Commencement is planned for 2024.



# Creating a 'Buzz' in the Garden

## Human Beans & Bees



**Australians love their coffee, and according to the Coffee 4 Planet Ark report, collectively we consume 6.2 billion cups of the caffeinated beverage every year. But it turns out, we aren't the only species that enjoy that 'buzz'!**

Research has shown that caffeine, which is naturally available to pollinators in low doses within the nectar of flowering plants such as Coffea and Citrus species, provides energy, enhances long-term memory and improves foraging efficiency for our bees.

Bees rely on a variety of cues to find good flowers and it seems that once they find a plant that has caffeinated nectar, a positive memory association is created. This results in frequent returns to the plant to get that rewarding 'boost'.

Human Beans, the world's first coffee fertiliser, is designed as an organic, versatile easy-to-use fertiliser, that feeds plants and improves soil health through a combination of nutritionally dense ingredients further enhanced with a biologically diverse formula called POPUL8™. The main ingredient however is spent coffee grounds

Treat the bees in your garden by encouraging plenty of flowers on your fruit trees. Feed seasonally with Human Beans to provide nutrition from the composted coffee grounds and chicken manure along with billions of beneficial microbes from the coating of POPUL8. It really is 'the bees knees'!



**12,540**  
**MEALS GENERATED**  
**FOR FOODBANK**  
**TO DATE**



**THE STORY**  
**HUMAN BEANS,**  
**GROUNDS FOR GOOD**

One bag of Human Beans sold at Bunnings provides two meals for those in need.

Foodbank SA is the largest food relief and rescue charity in the state, with a vision to end hunger. Neutrog and Foodbank SA have partnered to create a product that not only supports the environment by recycling coffee waste, but also generates meals for those in need.

Now that's grounds for good!

# Bush Tucker vs Bush Tucker Advanced Biological Formula

Which should you be using?



## Use pellets when:

### You live in an area with higher rainfall

Locations with abundant rainfall should harness the slow-release nutrients that pelletised Bush Tucker offers. And there's more than one way to use them, as Angus explains.

"Using Bush Tucker in planting holes is an obvious way to deliver an ongoing source of nutrients as the roots establish, and you can also apply at the establishment stage to help speed up the process," he says. "Likewise, top dressing with Bush Tucker Pellets during the warmer months in higher rainfall areas is another efficient way to keep your native plants thriving."

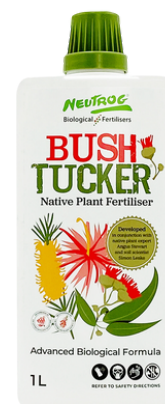
### Your garden needs organic matter

Working with organic matter? The pelletised form of Bush Tucker is a wise choice. "Unlike all other plant fertilisers, Bush Tucker is organically based, improving soil structure and adding humus to the soil as it breaks down," Angus says. "Using it can build your soil's ability to store water and nutrients, providing a great environment for beneficial microbes and good overall soil health."

### You prefer a less frequent application

Contrary to popular belief, native plants still need to be fertilised to realise their full potential. But when and how depends on the plant – and gardener. Choosing a slow-release option is ideal if you want less frequent applications. "Bush Tucker pellets are a great way to feed your native plants for several months at a time," Angus says.

On the other hand, Bush Tucker Liquid can give your plants an instant boost when they need it. "When you've just pruned and want to take advantage of favourable growing weather, liquid is best."



## Use liquid when:

### You live in an area with low rainfall

Nutrients must be in liquid form for plant roots to absorb them, so liquid is the most efficient form in a low rainfall area, according to Angus.

"For outdoor garden beds of native plants, liquid is especially important to optimise growth. I also water it into the foliage as plants can uptake nutrients through the leaves." Angus also notes that it's particularly handy through the cooler months when soil temperatures are lower, and root growth and activity have slowed down.

### You are aiming for a waterwise garden

Trying to be more water wise in the garden? Liquid fertiliser is your go-to. Compared to pellets that need to be watered in to release nutrients, Bush Tucker Liquid fertiliser is applied to your natives as is, saving your water bill.

### You have stressed plants

Native plants get stressed, too, so harnessing the variety of beneficial microbes within Bush Tucker Liquid can make them happy again.

"As well as complementing the nutrients in stimulating plant growth, the bacteria within Bush Tucker Liquid helps protect native plants against common problems such as root and collar rot," Angus says. "It also has other bacteria that release auxin hormones that stimulate root growth, plus others that help release nutrients that are locked up in the soil in an unavailable form."

### You have pets

Our furry friends are great sniffers, so applying a liquid reduces the risk of pets digging up and eating pellets. Pellets will not seriously harm pets, however they can cause upset tummies if ingested, and we don't want that!



# The Expert's Choice

Wildlife Art Museum of Australia (WAMA)



**The Wildlife Art Museum of Australia (WAMA) is a not-for-profit organisation who are establishing an art gallery dedicated to environmental art on a beautiful property just outside of Halls Gap at the foot of the majestic Grampians/Gariwerd National Park in western Victoria.**

The planned gallery will be surrounded by an Australian native botanic garden, natural bushland and wetlands that will inspire not only environmental artists, but nature lovers, botanists, horticulturalists, and home gardeners alike.

The Grampians region is a particularly special area in Victoria holding over 30% of the states flora, with this endemic garden alone set to house over 77 species of native plants, many of which are listed as rare, endangered or critically endangered. This is the first time where all plants from the Grampians region will be grown in one location, creating a truly unique experience for nature lovers.

When we last featured the garden in 2022, WAMA were preparing for the first plantings using Seamungus to condition the soils and create a nutritious base for the plants to establish in.

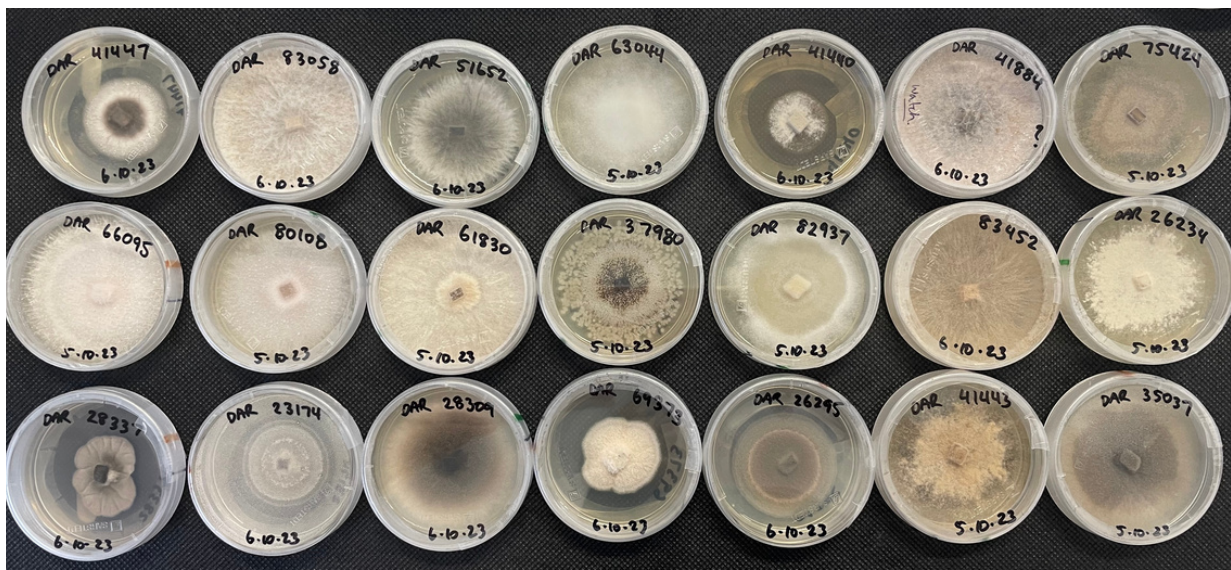
As you can see in the photos, the site has come a long way with garden areas established, rock borders formed and paths in place.

Neil Marriott, WAMA Flora Team Leader says, "The growth has been spectacular with very high survival rates. I think this is due to good soil preparation, coupled with the broadcasting of Seamungus prior to planting, fertilising with Bush Tucker and watering any 'touchy' species with POPUL8... Hard to believe its only 14 months old."

The photos feature Arapiles Mint Bushes '*Prostanthera arapilensis*' and the beautiful Grampians Boronia '*Boronia latipinna*'. "This plant (*Boronia latipinna*) is known to be very difficult to grow, yet at WAMA it is thriving and flowering heavily," says Neil.

The Grampians is one of the state's fastest growing tourist destinations for those wanting to get back to nature. We look forward to seeing the progress as WAMA Grampians Endemic Garden continues to take shape into a spectacular display of Grampians endemic plants.





**Did you know that every year, Australia produces 38 million square metres of turf with a value of close to \$300 million? From the humble patch of lawn in your backyard to larger commercial grounds that rely on healthy turf such as golf courses, sporting grounds and public parks, lawn holds a strong place in Australia's outdoor experience - but that doesn't come without its challenges.**

"As turf is often a single or a limited number of grass species, it can be considered a monoculture. This makes it prone to disease, particularly fungal diseases which can greatly reduce the value of the turf and effect the visual look and playability of the surface" says Neutrog R&D Manager, Dr Uwe Stroehler.

"At Neutrog, we have obtained approximately 30 fungal pathogens from the Department of Primary Industries NSW via the Plant Pathology and Mycology Herbarium, which have been isolated from various turf varieties.

With these samples, we can begin to investigate potential inhibitors of these fungal pathogens. Currently, Neutrog's R&D department have over 60 isolates which show inhibition of a variety of plant fungi, and have had previous success in the inhibition of Pythium in turf (Pythium is not a fungal pathogen, but an oomycete or water mould).

Chemicals are restricted in their usage and efficacy, which is why we believe that finding suitable inhibitors will provide a breakthrough for both home gardeners and the turf growing and sporting field management industries."



# Coogee Community Garden

From little things, big things grow



**The Coogee Community Garden WA is a group of passionate people who share a passion of creating an accessible garden for their local community.**

Although the group was incorporated in 2018, many years of licensing, planning, and fundraising occurred, before its official opening in October 2022. Since its inception, the beautiful gardens have become home to orchards trees including citrus, plums, avocados, bananas, and guavas. It also houses an outdoor gazebo, raised garden beds, community shed, and access pathways, inviting the greater community to come and experience the shared space.



Each year, members are invited to hire the raised garden beds to grow their own produce, as just one of many benefits. Garden members also receive free herbs, swap and share produce, access a growing library of gardening resources, and obtain a garden newsletter. They're invited to volunteer and assist with open days, gardening activities, and to serve on the committee, as well as attending workshops and busy bees. Those seeking a way to connect with the greater community and give something meaningful back are invited to visit the Coogee Community Garden and experience its magic for themselves.

At a recent popular event, members harvested and pressed olives from the garden. The resulting olive oil was plentiful enough that garden members were able to take it home and use it for cooking. At another in January, members crushed and bottled fresh tomatoes at a passata making day. In September, a preserving workshop taught everyone how to store and preserve their excess produce, ensuring nothing from the garden goes to waste.



With an overarching goal of creating an accessible garden that fosters the community spirit and embraces a love for gardening, the Coogee Community Garden certainly has achieved it. There is always work to be done, though, and garden members happily meet each Sunday to tend to the garden. Through weeding, planting, and digging, they get to enjoy their passion for gardening, enjoy the fruits of their labour in real time, and connect with others in the community.

The Coogee Community Garden is always interested in meeting new members, so if you have spare time on your hands, love gardening and the outdoors, and want to learn and share gardening knowledge, it's worth checking out. To visit the garden, head to their Facebook page and learn more about this amazing community initiative.



# Sgorra Bhreac Garden, Strathalbyn SA

Hill in the Mist

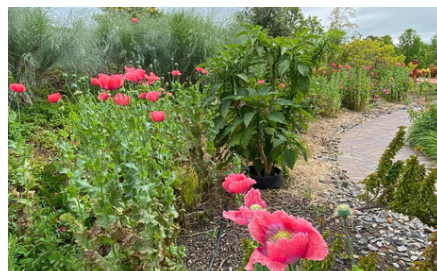


**Now a sprawling stretch of colours, scents, and textures, it's hard to imagine Sgorra Bhreac Garden once existed as a simple one-hectare plot of farm pasture.**

However, when owners Cynthia and Graeme Nicholson purchased the Strathalbyn land in 2010 with plans to build a home surrounded by a splendid garden, planting began immediately to make them a reality.

Although the couple refer to the garden as their retirement sanctuary, the grounds have also become significant for many others. Roughly translated from its Gaelic meaning of 'Hill in the Mist', the now-established Sgorra Bhreac Garden enjoys countless visitors from tours and groups and is appreciated privately by the Nicholsons and their loved ones.

Over the years, Cynthia and Graeme have lovingly planted, tended, and grown Sgorra Bhreac to its splendour today, complete with a stunning Tasmanian sandstone house they call home. The use of Neutrog's range of products throughout the garden – and their ongoing care – has ensured each plant reaches its full potential.



A testament to the community spirit of gardening, many have been included in the process of cultivating Sgorra Bhreac to the beauty it is today: the Murray Bridge Social Garden Club, which Cynthia belonged to, Strathalbyn gardener Colin Digance who helped the couple create a microclimate with plants that suits the area, and Cynthia and Graeme's grandchildren, who witnessed their visions of dinosaurs and fairy gardens spring to life.

With a passion for turning old into new, Sgorra Bhreac contains creatively evolved additions, such as a 100-year-old prison door from the Adelaide Gaol, now used in the fairy garden. The century-old discarded wine vats from the local Bleasdale Winery form the Jarrah bridge. Cynthia and Graeme's old favourites, including roses, agapanthus, hibiscuses, irises, and salvias, take pride of place in the flower garden. Garden ornaments, a spectacular cactus garden, a moat and island, and a dwarf fruit tree section are among some of the sensory delights guests enjoy.



Bordering the garden are carefully selected natives, including Acacia species of Pendula, Silver Princess, Pycantha, and Paradoxica, plus hakeas and grevilleas, to encourage birdlife. The inner garden contains hibiscus, frangipani, crab apples, mulberry, and crepe myrtles, to name a few. Perennials, shrubs, and long-lived trees are favoured, allowing visitors to relax and relish their surroundings, while the owners enjoy a low-maintenance garden for the retirement phase of their lives.

To explore the stunning Strathalbyn based garden for yourself, visit Sgorra Bhreac's Facebook page to learn more.



# Rare Fruit Arboretum

## The Rare Fruit Society of South Australia Visit Neutrog



**This month the arboretum was on full show as we welcomed The Rare Fruit Society of South Australia (RFSSA) to Neutrog for a tour of the factory and laboratory.**

Neutrog and the RFSSA have a longstanding connection, having worked together on the development of Gyganic for Fruits, Veggies and Citrus and also the establishment and ongoing management of the Rare Fruit Arboretum in Kanmantoo.

The RFSSA are dedicated to ensuring that rare and endangered Australian fruit trees are preserved for future generations. The Rare Fruit Arboretum plays a big role in housing these trees, including one of the largest collections of fig trees in the southern hemisphere.

The group boarded a bus and explored the processes that go into each of Neutrog's products, followed a presentation in the laboratory with Dr Uwe Stroehler detailing the science that Neutrog is well know for.

The members also journeyed to the arboretum, where President of the RFSSA, Brenton Kortman, gave a presentation about the work that is being done in Kanmantoo.

Following the tour, members gathered for a working bee in the Rare Fruit Arboretum to spread Whoflungdung around the trees in preparation for summer.

### About Whoflungdung

Whoflungdung is a biologically activated, nutrient rich, weed free, absorbent, super mulch!

Whoflungdung is absorbent, as it helps retain moisture and warmth in the garden, which improves nutrient uptake. It adds nutrients to the soil for both the beneficial bacteria and plants to feed on – significantly reducing, if not eliminating, the nitrogen draw-down issues that are associated with most other mulches.







## Year round fertilising for year round health



In addition to our newsletter there are plenty of ways to keep in touch with us or to find out more. Below you will find link buttons to our Neutrog TV page (which is hosted by Youtube) where you can find a range of video's as well as copies of Dr Uwe's weekly chats with Graham Ross.

On Facebook we regularly post gardening tips, stories from gardeners who use Neutrog products to stunning effect. We also feature staff news and videos from around the site. If you visit the page, make sure you click Like and Follow to ensure you keep seeing all the updates.

**See you in December!**  
**The Neutrog Team**

## Our Partners

Over the years Neutrog has collaborated with many plant societies that have trialled and subsequently endorsed some of our products. These product endorsements provide retail staff and home gardeners with the confidence to use and recommend Neutrog products.

With a combined membership base of over 10,000, some of these endorsing societies include:



*We never have enough room in our newsletters to share all of our inspirational stories and tips from our gardening community, but they do appear on our Facebook and Instagram pages regularly...why not join us there?*

