



The Pooh Bah News

Dear Pooh Bah Club subscribers,

With winter only a month away, this month is your last opportunity to make use of the autumn conditions to plant bulbs and prepare the garden for winter.

Bulbs are great for all gardeners and require minimal attention. At planting, add Seamungus pellets then continue to use Seamungus Advanced Biological Liquid once the plants have established to help increase resistance to pests and disease, and stimulate healthy growth above and below ground.

Your local garden centre will now have a great range of bulbs to choose from including daffodils, jonquils, freesias, and tulips, and by planting now you are bound to be rewarded with their beautiful colours and fragrance.

This month is a particularly exciting edition as we officially launch Human Beans into Bunnings stores across Australia. We also share a visit to the Waite Arboretum in Adelaide, feature beautiful produce from Post Office Farm in Tasmania, shine a light on locally grown blooms with Petal Head Flower Farm & Florist in Queensland, and plenty more.

As always, we encourage you to visit our social media pages for more news and stories throughout the month. Our community has a wealth of information, and our team are also happy to answer any product of garden queries you have.

Happy gardening!
The Neutrog Team



Photo of the Month / Official Launch of Human Beans



Have you heard the good news? Human Beans has officially been launched and is available at your local Bunnings store!

The Human Beans – Grounds for Good project is the culmination of over 7 years of research and trials between Neutrog and Foodbank SA to identify ways to economically collect and repurpose spent coffee grounds.

In April, we were thrilled to launch Human Beans, a coffee fertiliser for veggies, fruit and flowers, into Bunning stores across Australia with an event in the Little Sprouts Kitchen Garden at the Adelaide Botanic Garden.

The garden created the perfect atmosphere for the event, with plenty of produce and autumn blooms filling the space with life.

Over 60 guests joined the Neutrog team for the afternoon to hear from speakers including Director of the Botanic Gardens and State Herbarium of South Australia Michael Harvey, Graham Ross OAM, Chief Executive Officer of Foodbank SA Greg Pattinson and Neutrog Managing Director Angus Irwin.

Human Beans also had some time to shine on the Channel Nine News which you can view by clicking the video link below:



You can now access Human Beans at your local Bunnings store, where every bag sold benefits your garden, the environment, and the wider community.



Graham Ross Pays a Visit to Neutrog



Prior to the launch event for Human Beans, Graham and Kent Ross joined us at the Neutrog factory for a tour of the facility.

Neutrog has a long history and strong relationship with Graham Ross and The Garden Clinic, with Neutrog's R&D Manager, Dr Uwe Stroehler appearing on Radio 2GB with Graham every Saturday to talk all things plant and soil biology.

Having Graham at the site presented an exciting opportunity to show him some of our latest developments, including some interesting R&D projects happening in the laboratory.



Great Company at Neutrog's Company Lunch

Last month we welcomed a wonderful group of guests to our company lunch for May, including a number of guests who travelled from Victoria and the Australian Capital Territory to be with us on the day.

We were happy to welcome Greg from the Australian Plant Society, Hiti and Walter from Centrex, Barry, John, Mario and Liz from the Pioneer Court Community Garden, and Jock.

We were also pleased to host Zoe Knapp and Peter Byron from the Australian National Botanic Gardens (Canberra), along with Caitlin Gray and Marie Velthoven from the Royal Botanic Gardens (Cranbourne).

This visit provided an opportunity to see the progress of research that Neutrog has been carrying out over the past few months into a pathogenic fungus called *Armillaria* which has been responsible for plant decline and mortality at the Royal Botanic Gardens Cranbourne. This research has potentially industry-wide applications not only for botanic gardens but more widely throughout horticulture, agriculture, and forestry.

The afternoon went off without a hitch, with all guests experiencing a bus tour around the factory and newly upgraded production facilities, followed by a presentation with Dr Uwe Stroehler in the laboratory to understand the science behind the work we undertake at Neutrog.



Site News / What's happening at Neutrog?



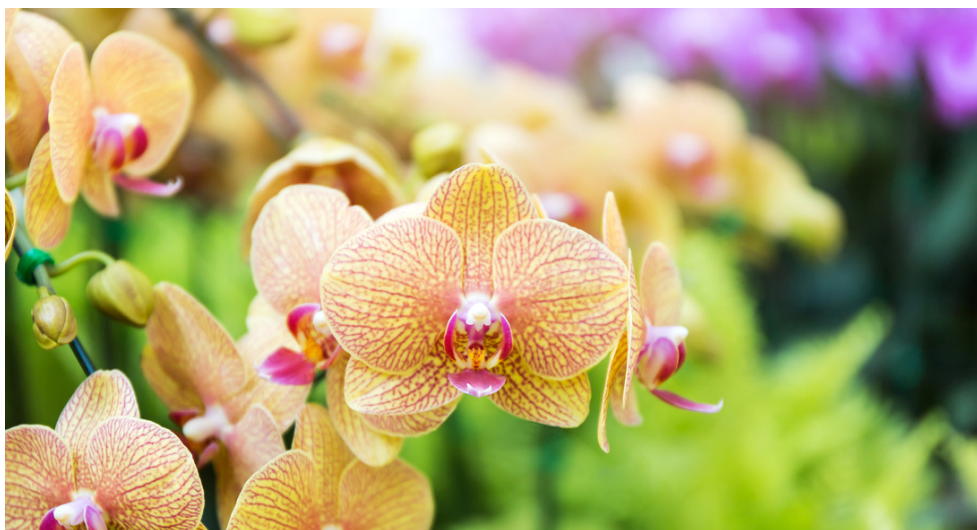
New Aerial Images of the Neutrog Factory in Kanmantoo

2023 has so far been a big year for our warehouse and production crews with significant upgrades enabling more efficient manufacturing and storage processes.

In our warehouse, new pallet racking was added in January to increase storage capacity of retail and commercial products. These necessary additions have resulted in pallet racks being closer together, requiring reach trucks to access products in the narrow aisles.

This month our Warehouse Manager, Leigh, was very excited to meet with Derek from Toyota to receive the keys for one of two new reach trucks.

Product of the Month / Strike Back for Orchids



Whether you are a passionate keeper of orchids, or you have a large collection of potted flowering and fruiting plants, Strike Back for Orchids is the perfect staple for gardeners. It is available in pellet or advanced biological liquid form, both of which provides a full range of nutrients for healthy and strong plants.

Like many of Neutrog's signature products, the development of Strike Back for Orchids involved extensive trials with various commercial orchid growers and via the members of a number of orchid clubs throughout Australia in 2006. Success in these trials has resulted in Strike Back for Orchids being recommended and endorsed by the Cymbidium Orchid Clubs of SA, NSW, WA and Victoria.

Strike Back for Orchids is an organic-based, chemically-boosted fertiliser specifically developed to enhance the growth and flower development of orchids and other flowering plants, and combines the best of both worlds – its organic base provides a full range of plant nutrients in a slow release form, whilst the carefully selected water-soluble nutrients have been added to maximise the performance of each application.



Strike Back for Orchids Advanced Biological Formula

The formula for Strike Back for Orchids liquid has been improved with the addition of specific beneficial bacteria and fungi that suppress pathogens and encourage growth. This Advanced Biological Formula represents a major R&D project undertaken by Neutrog which involved gathering soil samples from Australia's best gardens, farms and horticultural operations and screening them for individual microbes which were then isolated and identified for their unique characteristics. The difference between the original formula and the improved formula can be seen in the images to the left from a bromeliad trial at the Adelaide Botanic Garden.



Strike Back for Orchids (original formula)

Whilst Strike Back for Orchids can be applied throughout the year, the lower nitrogen to potassium ratio has been specifically designed to enhance the flowering process and hence Strike Back for Orchids should be applied at least from February to October each year – Seamungus can be applied for the remainder of the time, November through to January.

DID YOU KNOW... Strike Back for Orchids liquid is also proven to be effective on lawns with Neutrog's Paul Dipuglia saying "if I have people coming over on the weekend and I want my lawn to really green up quickly, I will use Strike Back for Orchids Advanced Biological Formula. The nitrogen in Strike Back for Orchids, in a liquid form, gives a fantastic, almost immediate result. But for long term impact, Sudden Impact with the POPUL8 is impossible to beat."

Strike Back for Orchids is available in Bunnings, Mitre10 and independent retailers across Australia.



Autumn / 'Berry' Good Blueberries!



There is nothing better than enjoying blueberries straight from your backyard - and it isn't as difficult to do as you may think! If you are thinking of adding blueberries to your garden, now is the time to start planting. They are a particularly great option for small gardens as they grow well in pots or containers.

Blueberries are available in a range of varieties including evergreen and deciduous varieties, some being ornamental with foliage that turns beautiful shades of reds and pinks in autumn.

Blueberries need a sheltered spot with full sun to partial shade, and acidic soil (around 4 to 5.5pH). For pots you can choose a good quality potting mix specifically made for acidic plants like blueberries and azaleas.

While they are relatively easy plants to grow, a lot of people struggle with them – the answer is in the soil. They require good drainage and a soil rich in organic matter, so adding some compost, peat moss and Neutrog's Seamungus to the hole before planting will certainly help. Create a planting hole about 15cm wider and deeper than the root system and water well after planting.



Blueberries are self-pollinating; however, cross-pollination with compatible varieties produces a better crop, creating larger berries and larger yields. Both varieties of blueberries involved in cross-pollination need to have bloom times that are at the same time of the season to be successful.

Fertilising is recommended in early Spring before the leaves have grown in. This gives the fertiliser time to be absorbed by the roots of the blueberry before it enters its active growth stage during summer. Feed new plants once in early spring and again in late spring. As Neutrog's Kahoona is specifically designed for acid loving plants, it's ideal for blueberries.

Application Rates

Kahoona is an organic based, chemically boosted fertiliser, specifically developed to enhance the growth and flower development of acid loving plants such as camellias, gardenias, azaleas, rhododendrons – and blueberries!

Apply evenly to pre-soaked soil around the drip line of the plant, avoiding contact with foliage or flowers. Water again well.

Apply after signs of new season growth and thereafter every 8-10 weeks throughout the growing season – Spring to Autumn.



R&D Partner / The Stunning Gardens of Urrbrae House



Nestled in the Adelaide foothills, Urrbrae House was the original home of Peter Waite – a wealthy and pioneering pastoralist, situated on 54 hectares of land. On his death in 1922 at the age of 88, Waite gifted his property to The University of Adelaide on the proviso that the eastern half of the estate was to be used for scientific studies related to agriculture, while the western half was to be set aside as a park for the enjoyment of the public.

Today, the property is an accredited museum and part of the University of Adelaide's School of Agriculture, Food and Wine. It offers a stunning space for visitors to walk around the impressive grounds and appreciate the collection of trees that have been carefully cultivated for scientific, horticultural, and educational purposes.

The extensive gardens of the Waite Historic Precinct display an impressive range of beautiful designed and innovative spaces that reflect the history of the people who lived and worked on the original site.

West of the Waite Historic Precinct and Urrbrae House is the Waite Arboretum covering over 25 hectares and containing, around 2,500 specimens representing more than 800 species in 200 genera including special plant collections of eucalypts, pears, oaks, acacias, palms, and cycads.



The Urrbrae House Gardens are one of Adelaide's most innovative, distinctive, and beautiful gardens, complete with the Twentieth Century Rose Garden containing over 1500 bushes representing more than 200 cultivars and species roses that follow the history and development of roses from each decade of the twentieth century. There is also a Sensory Garden, the Garden of Discovery and sculptures featured throughout.

The gardens and Arboretum are maintained by University staff assisted by a dedicated team of volunteers as well as Neutrog, the Mediterranean Garden Society, the Rose Society of SA, Heritage Roses of Australia, the Palm & Cycad Society of SA, and Ross Roses.

GOGO Juice, Sudden Impact for Lawns + POPUL8, Sudden Impact for Roses and Kahoona are used in various areas of the garden, and soon POPUL8 for R&D purposes.

Neutrog's Helen Lovel and Hazel Ashby recently toured the gardens, taking these beautiful photos along the way.



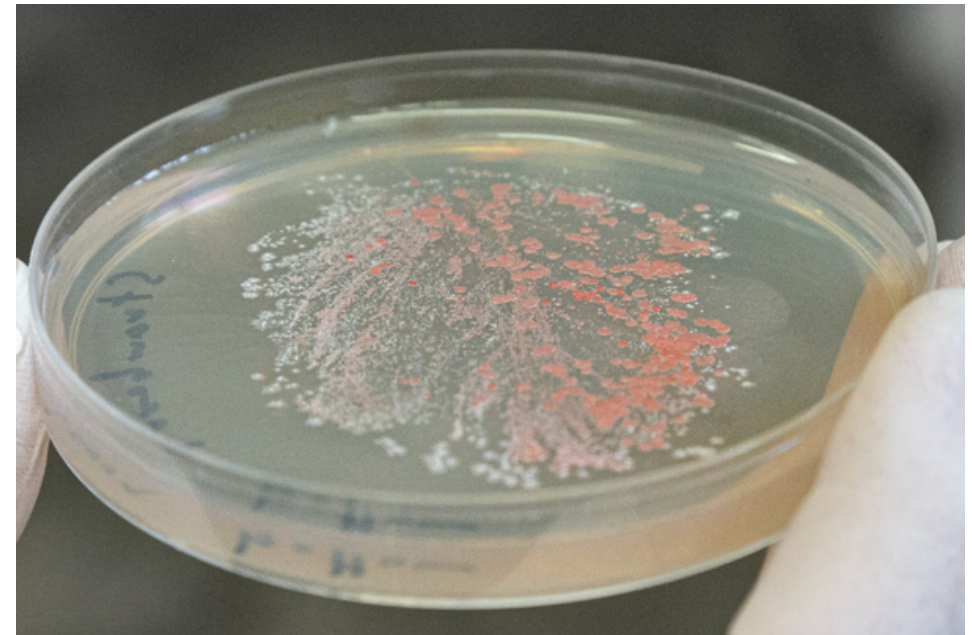


Below is a selective agar media designed to allow the growth, only of specific microbes that are known to enhance flavour.

Microbes that can enhance the flavour of strawberries can be found on the roots, leaves and surface of strawberries and more likely from strawberries grown on farms known to have exceptionally flavoursome fruit.

The leaf from one of these strawberries has been pressed onto a plate, and you can clearly see a series of pink and white-ish colonies. The pattern of these colonies seem to initially indicate that the bacteria are tending to grow in the veins of the leaf surface and less so on the remainder.

These bacteria will now be purified and identified before being tested to see if they do in fact, enhance flavour.





Most of those in the Cymbidium Orchid world would know or know of, Graham Morris. Graham owned and operated Valley Orchids for many years and in that role and in his then role as President of The Cymbidium Orchid Club of SA (COCSA), along with many of the members there of, were all intimately involved in the development & subsequent endorsement of Neutro's specialist Orchid Fertiliser, Strike Back for Orchids. That was over 15 years ago.

These days Graham still loves growing his Cymbidium Orchids and remains an active member of the SA Cymbidium Orchid Club.

Whilst picking up some Neutro product recently Graham provided Neutro's Paul Dipuglia, with a Cymbidium Orchid which was clearly suffering from a severe root disease and asked him to pass it onto Dr Uwe for his assessment.

Paul took the Orchid home as he wasn't due to go up to Kanmantoo for a few weeks. He sat it in a bucket with a small amount of diluted POPUL8, simply to keep it alive until he got it to Dr. Uwe. It then sat outside Dr Uwe's lab for a week or so until Dr Uwe could look at it. When Dr Uwe did look at it he discovered the following & reported it back to Paul;

"I know you dropped off an orchid about 10 days ago & we finally got around to having a look at it.

Looks like there is a pathogen called Fusarium in the growing media plus a range of other fungi and these maybe good or bad, we don't know.

I must say however, that it has put out two new shoots so perhaps it has turned the corner after being given some what I think you said was POPUL8."

The attached photos show the new shoots and new root growth and these were sent to Graham for his comment and he responded with "I am amazed that this plant seems to be recovering. Thank you for the photos. The plant looks well on the way to recovery." Along with "When Paul told me that the plant I gave to him was putting out new growths, I found it hard to believe, but found it quite exciting. I have already started treating any plant showing rot, with POPUL8. Too early to get results"

We are looking forward to hearing how Graham goes with his own trials.

Petal Head Farm & Florist / Unique Blooms in Gympie QLD



Flowers are a gift of nature, enriching spaces with beauty, colour, and design. Growing blooms and creating floral arrangements can be a delightful artistic outlet, and one that is cherished by Erin Dore in Gympie, Queensland, who established Petal Head Farm in 2021.

Having always been creative, Erin studied a Bachelor of Design at QUT and majored in Interior Architecture and graduated with honours. Her career as an Interior Designer began in Sydney and continued for over 10 years before moving back to the countryside.

"For a girl that grew up on a farm, sitting behind a computer screen all day was a bore! So, I up and left at the end of 2020 and came back to Gympie with no real plans other than to catch up on sleep," says Erin.

Her flare for design didn't go to waste in her downtime however, establishing her boutique flower farm and florist where she has a hand in the entire process from growing flowers from seed, to designing unique and whimsical arrangements for bouquets and events.

"We grow a wide variety of flowers and foliage so that we can accomplish fully realised bouquets and wedding offerings throughout the year. I spend most evenings researching flowers that may have been forgotten or hunting down a flower I may have seen a favourite florist from abroad use. However, some of our main crops are Dahlias, Gerberas (unusual varieties only!! No carnival coloured Woolworths types), Delphiniums, Snapdragons, Stock, Zinnias, Icelandic poppies, Roses, Ranunculus, Flannel Flower, Lisianthus just to name a few. My favourite flower of all time is probably them most difficult to grow in Queensland, the Icelandic Poppy- I love that you can observe it throughout its fleeting lifespan, from the cracked bud stage to this gloriously wild and unreal looking paper like bloom. I also have an obsession with Delphiniums... they're just indescribably magical."

At Petal Head Farm, you can expect a natural, wild and whimsical floral style. Erin prefers to work with nature, and not against it, and as a result produces free spirited arrangements. All blooms are grown with help from Neutrog products to ensure healthy soil and strong plants.



Petal Head Farm & Florist / Unique Blooms in Gympie QLD



"We use as many Neutrog products as possible! We use Sudden Impact for Roses on all of the flowers at the farm and it is perfection. GOGO Juice - the smellier the better I always think, and this definitely delivers. We use this on newly planted seedlings as a bit of a rescue remedy to alleviate transplant stress and also folial fertilise the entire farm. Whoflungdung was one of the first products we ever used. We probably began using it about 6 months in to the Petal Head Farm journey and we noticed the effects almost immediately.

Bush Tucker is used on the natives we grow which are Geraldton Wax, Thryptomene, Flannel Flowers and all of our Gum and Wattle Trees."

With Mother's Day coming up in just over a month, we hope these beautiful photos from Petal Head Farm provide some inspiration!



Application Rates

Roses — Apply 100g per bush to established rose plants. For potted roses, use 15g per 150mm pot size, increasing by 5g per 25mm pot size increase.

General Garden — Use 100g per square metre every 8-10 weeks throughout the growing season to presoaked soil around the dripline of the plant and water in well. Avoid contact with foliage and flowers.

Old Post Office Farm / Growing Produce in Lymington TAS



In 2015, Roslyn and Anthony Mangold bought a 16 acre organic orchard in Lymington, Tasmania with an old post office building in the property destined to become their home.

Lymington is based in the Huon Valley in the South East of Tasmania, an area of the state that is home to a wonderful variety of produce growers and farmers. The Huon Valley has a rich history in the apple industry in particular, with the area known for fertile soils and cool temperatures, perfect for growing cool climate fruits including apples and cherries.

Apples, apricots, plums, pears and quinces had already been established at Old Post Office Farm, with more varieties added by Ros and Anthony such as oaches, garlic and other vegetable patches and ornamentals.

Continuing the efforts put in before them, they also focus on organic inputs and sustainable growing. One such biological input that they use by the pallet load is Whoflungdung.

"We buy Whoflungdung to enrich our soil and add vital organic matter. We use it to mulch new trees put into the orchard as well as a vital mulch for our mini tomato market garden."

Whilst adding a variety of beneficial bacteria to the soil and retaining moisture, Whoflungdung also acts as a blanket to regulate soil temperature and retain warmth around the root zone. "Our soils are looking so much richer where I have used Whoflungdung," says Ros.

In addition to Whoflungdung, Ros also mentioned that they will be trialing Seamungus to support plant growth and improve moisture retention on their fruit orchards.

A biologically activated, nutrient rich, weed free, absorbent super mulch, Whoflungdung is composted, inoculated with eNcase and filled with nutrients, so that when added to the soil it introduces a wide diversity of beneficial bacteria. These beneficial bacteria readily proliferate through the soil, acting as a barrier/deterrent to pathogenic bacteria, providing a safe environment for healthy plant growth.

Apply a uniform layer of Whoflungdung at 25mm to 100mm deep to cover the soil, leaving a 50mm to 100mm gap around the base of plants, trees or shrubs.



History of a Common Word



After recently attending our company lunch Agriflex/Centrex Agronomist, Walter, explained an interesting history behind a common word and we thought it was well worth a share:

"In the 16th and 17th centuries, everything for export had to be transported by ship. It was also before the invention of commercial fertilisers, so large shipments of manure were quite common.

It was shipped dry, because in dry form it weighed a lot less than when wet, but once water (at sea) hit it, not only did it become heavier, but the process of fermentation began again, of which a by-product is methane gas. As the stuff was stored below decks in bundles - you can see what could (and did) happen.

Methane began to build up below decks and the first time someone came below at night with a lantern, BOOOOM! Several ships were destroyed in this manner before it was determined just what was happening.

After that, the bundles of manure were always stamped with the instruction; 'Stow High In Transit' on them, which meant for the sailors to stow it high enough off the lower decks so that any water that came into the hold would not touch this "volatile" cargo and start the production of methane.

Thus evolved the term ' S.H.I.T ' , (Stow High In Transit) which has come down through the centuries and is in use to this very day."



Do you ever wonder what products the staff at Neutrog choose? Which ones we use in our own gardens?

This month we introduce you our Managing Director and some incredible results they have experienced on a case of brown patch using POPUL8.

Our MD has been trialling POPUL8 on their lawn for quite some time now, and the results are always incredible to see. This time, they noticed a brown patch beginning to appear in the middle of the turf in mid March.

POPUL8 was applied to the area and only two and a half weeks later the area was vibrant green and lush with new growth.

POPUL8 follows the work of our R&D team isolating and identifying specific bacteria and fungi from soil samples from around Australia, where we have added a customised selection of these bacteria and fungi based on their unique characteristics. The impact of these microbes on lawns is exceptional, hence why Sudden Impact for Lawns now comes coated with POPUL8.



Application Rates

Dilute one capful (40mL) of POPUL8 per 10 litres of water which will cover up to 8m² of soil. Water in well.

Apply POPUL8 once per season to protect and enhance plant health and growth, or apply to plants stressed by an event, such as heat, flood and drought or pests and disease.

Use POPUL8 during low UV or prior to a rain event if possible (UV and extreme hot, dry conditions will kill many of the microbes).

Next Month / Keep In Touch Until June!



In addition to our newsletter there are plenty of ways to keep in touch with us or to find out more. Below you will find link buttons to our Neutrog TV page (which is hosted by Youtube) where you can find a range of video's as well as copies of Dr Uwe's weekly chats with Graham Ross.

On Facebook we regularly post gardening tips, stories from gardeners who use Neutrog products to stunning effect. We also feature staff news and videos from around the site. If you visit the page, make sure you click Like and Follow to ensure you keep seeing all the updates.

See you in June!

The Neutrog Team

Our Partners

Over the years Neutrog has collaborated with many plant societies that have trialled and subsequently endorsed some of our products. These product endorsements provide retail staff and home gardeners with the confidence to use and recommend Neutrog products.

With a combined membership base of over 10,000, some of these endorsing societies include:



We never have enough room in our newsletters to share all of our inspirational stories and tips from our gardening community, but they do appear on our Facebook and Instagram pages regularly...why not join us there?

