



The Pooh Bah News

Dear Pooh Bah Club subscribers,

As we all prepare for winter, don't forget to plan ahead by planting your bulbs for a beautiful display come springtime.

Bulbs are perfect for all gardeners and require minimal attention and there are varieties that suit the gardens, pots and even indoors. At planting, add Seamungus pellets, then continue to use liquid Seamungus once the plants have established to help increase resistance to pests and disease, stimulate healthy growth both above and below ground.

Your local garden centre will now have a great range of bulbs to choose from including daffodils, jonquils, freesias and tulips, and by planting now you are bound to be rewarded with their beautiful colours and fragrance.

In this month's newsletter there is a very exciting announcement for our site at Kanmantoo, we look at the bearded irises from Smokin Heights, we get to know the Bendigo & Goldfields Chrysanthemum Association and we learn about fabric composting trials that are currently underway in the Neutrog laboratory.

In between newsletters, we encourage you to visit our social media pages for more news and stories. You can also invite your friends to join the 'Pooh Bah Club' by forwarding this email so that they can also enjoy this newsletter.

We wish everyone a happy Mother's Day next Sunday.

Happy gardening!

The Neutrog Team



Photo of the Month / Bearded Irises at Smokin' Heights



With gardeners beginning to plant their spring flowering bulbs, we thought we would provide some inspiration with the story of Melissa Schillers picturesque bearded iris garden in Kapunda named 'Smokin Heights'. Melissa is a member of the Iris Society of South Australia, and her garden is a beautiful representation of her passion and expertise for irises.

Melissa has been growing irises for 25 years, a love that began in her 20's while her four children were still young. "My Nana and I would often talk about 'more to life' options, and she gave me four bearded irises and said that 'gardening is good for the soul'. When I saw the bearded iris bloom for the first time, I was instantly hooked!"

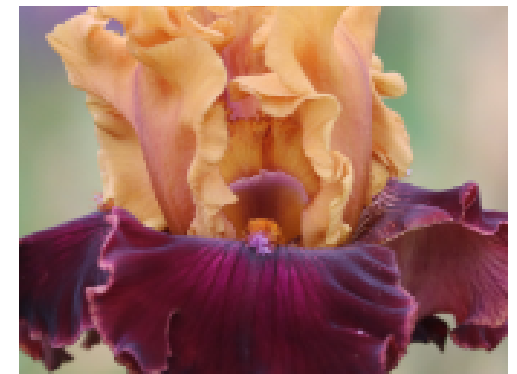
Two years after that she had continued to care for the iris plants gifted to her by her Nana and had added another 275 varieties on her half-acre block in Kapunda. When in bloom, the colours created a magnificent display which Melissa would allow the public to view and purchase iris rhizomes.

Soon enough more space was needed, so Melissa and her family sold their house in Kapunda and moved to a larger property between Kapunda and Tarlee, of course taking some of the irises with her. There was an existing horse paddock on the property that was quickly converted into an iris patch and was open again for the public to view.



Smokin Heights has been a family business since 2013 operated by Melissa and her third child, Bailey. "We dabbled in hybridizing, and pre-covid we would travel to the USA each year to use their genetics to hybridize. We have introduced our own iris varieties, and we also import from the USA."

When in full bloom, the iris field at Smokin Heights is an incredible sight, with the vast range of iris varieties making a majestic display complete with the rolling hills and farmland lining the background.



If you are interested in adding irises to your garden, Melissa has kindly provided some helpful tips to get you started.

“Bearded iris thrive in the heat in summer and in the frosty cold conditions of winter, making them ideal for places like South Australia.”

Late summer is the best time for planting or dividing up established clumps. Choose a position which receives full sun, or at least 6-7 hours of direct sunlight and prepare your bed or position in the garden and incorporate Seamungus or Rapid Raiser throughout and water in with GOGO Juice.

When planting bearded iris, Melissa says “Don’t plant the rhizome too deep, it just needs a light covering of soil over the top of the rhizome. Planting them deeper will cause root rot which will cause the rhizome to die.”

“Iris planted in a garden need to be tidied from time to time. We use our fingers and rake the dried leaves from the top of the rhizome to keep it clear of debris. The rhizome needs to see the sun and feel the cold to encourage flowering for the next season. Some of our customers say that they prune the iris leaves to ground level after they have finished flowering – don’t do this. Those leaves are putting nutrients into the rhizome for flowering next year.”

Feed them seasonally with Sudden Impact for Roses once established and GOGO Juice when they do need a drink, and it doesn’t get much harder than that, to enjoy these stunners in your garden.

If you would like to learn more about Smokin Heights and access their catalogue, go to www.smokinheights.com.au





Lights, Camera, Action at Neutrog

We had a production team from Melbourne at Kanmantoo in April who have been working with us to capture some footage of what happens on site.

This footage will be edited into videos that we will use in presentations, garden club talks and on social media to give a more in depth insight into our history, our R&D, our processes and the exciting products about to be released.

Our thanks must go to the members of the Mylor Garden Club who were willing extras as we filmed in the arboretum and also to our staff (and Toby the office dog) who had starring roles.



Presenting POPUL8 to Ace Ohlsson in Sydney

At the end of April, members of the Neutrog team including R&D Manager Dr Uwe Stroehler, Neutrog's Managing Director, and Helen Lovel and Julie Walker from our sales team met with staff and agronomists at Ace Ohlsson in Sydney for a presentation about our highly anticipated product, POPUL8.

Dr Uwe presented some of the research which has formed the basis of POPUL8 that contains 40 specially selected bacteria and fungi that have been identified, isolated and added for their specific purpose and beneficial characteristics.

Ace Ohlsson are part of the Elders network and have serviced clients across the New South Wales horticultural market for over 80 years with their expertise in plant nutrition and crop management.





Factory Tour at Neutrog HQ

Throughout May we have had the pleasure of hosting numerous groups for factory tours.

Over 50 members from Milang Garden Club, Mylor Garden Club and the Enfield Baptist Retired Men's group joined us in Kanmantoo for a deeper look into what we do at Neutrog including the laboratory, manufacturing processes and our work with the Rare Fruit Society of South Australia in the two arboretum sites.

If you are part of a group and have an interest in gardening, we encourage you to get in touch with our team to organise a tour or a talk at an upcoming meeting! Bookings can be made by contacting our office on 08 8538 3500.



Export

During autumn, our export team are at their busiest manufacturing and shipping export orders.

In the last 12 months, we've seen enquiries regarding our capacity to export continue to grow, particularly with the market pressure on chemical fertilisers and as we all look at more sustainable ways to increase agricultural production.

In the last month our export loader has been used to fill twenty 40-foot shipping containers which are bound for Asia.

The extendable mobile export container loader makes this process infinitely more efficient and less disruptive to our regular production schedule. The pellets, which are stored in silos in our warehouse, travel from the silo out to the loader via a conveyor belt and into the extendable loader and then into the container.

This container features a sealable 'liner' which ensures our products arrive at their destination in the best possible condition after such a long journey.

New Education & Research Centre

It will come as little surprise, that at Neutrog, we are very passionate about what we do. And that passion extends to sharing our commitment to research and development, producing biologically advanced products and innovative manufacturing. So it is with great excitement that we are able to share our plans for a fit-for-purpose Education Centre and a dedicated Research Centre to be built on our site at Kanmantoo.

These two individual spaces represent remarkable opportunities for two key areas of our business.

For our Research and Development department, the new Research Centre will see a significant expansion in the size of the laboratory. This will facilitate more equipment being installed in the lab so more projects to be undertaken on site. Our capacity to store soil samples and individual species of bacteria and fungi will also be significantly increased.

But the most noticeable difference for our growing R&D team will be the overall visual design of the space. Currently, the laboratory is surrounded by our Head Office building and liquid storage facility and while the location won't change - the visibility will.

Our new Research Centre will be 'on display' through the use of significant amounts of glass (sourced sustainably from the deconstruction of the West End brewery). This change was a conscious objective of the project as a way to demonstrate that R&D is at the core of everything we do. For visitors to the site, they will be able to see directly into the lab from multiple locations.

For our R&D team, solid walls being replaced with glass will mean they will be able to see through into our liquid brewery room and our tank storage shed increasing their engagement with the teams in these areas, with whom they work very closely. The glass will also give visitors to our new Education Centre, a view straight into the Research Centre.

A Visitors Centre has been on the cards at Neutrog for some time, but over the last 18 months, it has become clear that a more accurate description of this area is an Education Centre. It reflects the significant interest we have from school groups, horticultural tertiary organizations, gardening groups, community organizations as well as industry bodies, agronomists and distributors to learn about what we do - as opposed to just 'visit'.

Currently, we have been limited in our ability to host larger groups of visitors to our site due to space and so the opportunities that will be opened up by this dedicated centre, will be fantastic. With full catering facilities, audio visual equipment - and the view into the Research Centre - this will be a dynamic space with the flexibility to accommodate many different uses.

Over the coming months, we are looking forward to sharing the journey of these two projects with you. There will also shortly be an announcement about an opportunity for our Neutrog community to be more closely involved in these projects and share in Neutrog's future.



Growing Great Fruit & Veg / Growing Blueberries

There is nothing better than enjoying blueberries straight from your backyard - and it isn't as difficult to do as you may think! If you are thinking of adding blueberries to your garden, now is the time to start planting. They are a particularly great option for small gardens as they grow well in pots or containers.

Blueberries are available in a range of varieties including evergreen and deciduous varieties, some being ornamental with foliage that turns beautiful shades of reds and pinks in autumn.

Blueberries need a sheltered spot with full sun to partial shade, and acidic soil (around 4 to 5.5pH). For pots you can choose a good quality potting mix specifically made for acidic plants like blueberries and azaleas.

While they are relatively easy plants to grow, a lot of people struggle with them – the answer is in the soil. They require good drainage and a soil rich in organic matter, so adding some compost, peat moss and Neutrog's Seamungus to the hole before planting will certainly help. Create a planting hole about 15cm wider and deeper than the root system and water well after planting.

Blueberries are self-pollinating; however, cross-pollination with compatible varieties produces a better crop, creating larger berries and larger yields. Both varieties of blueberries involved in cross-pollination need to have bloom times that are at the same time of the season to be successful.

Fertilising is recommended in early Spring before the leaves have grown in. This gives the fertiliser time to be absorbed by the roots of the blueberry before it enters its active growth stage during summer. Feed new plants once in early spring and again in late spring. As Neutrog's Kahoonna is specifically designed for acid loving plants, it's ideal for blueberries.



APPLICATION RATES

Kahoonna is an organic based, chemically boosted fertiliser, specifically developed to enhance the growth and flower development of acid loving plants such as camellias, gardenias, azaleas, rhododendrons – and blueberries!

Apply evenly to pre-soaked soil around the drip line of the plant, avoiding contact with foliage or flowers. Water again well.

Apply after signs of new season growth and thereafter every 8-10 weeks throughout the growing season – Spring to Autumn.

Roses / Preparing to Plant a Bare Rooted Rose



Bare rooted roses will soon begin making an appearance in your local garden centre, but before planting now is the time to pick a suitable position in your garden and prepare the soil for rose growing success.

A bare rooted rose is a plant supplied without foliage, flowers or soil around the roots. This can only be done when the plants are in their winter dormancy (they are effectively asleep), and are ideally planted between late May and the end of August.

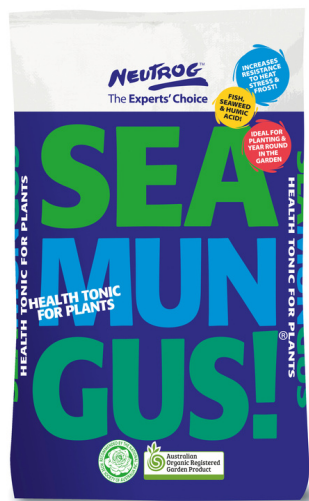
Before planting, establish an area in your garden where you plan to plant them. This location needs to get at least 6 hours of sunlight a day, and needs to be positioned away from any other established shrubs or trees.

When planting a rose where an old rose was removed, we recommend replacing a 1/2 barrow load of fresh soil to avoid rose replant disease. Dig in plenty of well-rotted compost or manure and make sure weeds are removed so they don't compete with the young trees for food and moisture.

Sandra Turner, President of the Rose Society of Victoria recently moved into a new home. She mentioned to us,

"I have had such joy poring over rose catalogues and deciding which ones I will be planting in my new garden. That, and readying my soil for when they arrive. Seamungus and GOGO Juice are my go-to's for preparation and it settles the new plants in beautifully."

Look out for next month's newsletter (it will arrive in your inbox on the 1st of June) as there will be a detailed guide to successfully planting bare rooted roses to give them the best possible start in their new home.



Product of the Month / Gyganic for Veggies, Fruit & Citrus

If you are a keen fruit & vegetable gardener, then you are bound to have heard of Neutrog's Gyganic for Veggies, Fruit & Citrus. Specifically developed to enhance fruit size, quality and taste, Gyganic has become a garden staple for achieving nutritious crops year round.

As we edge closer to winter, now is the time to consider planting members of the brassicas including broccoli, brussels sprouts, cabbage, cauliflower, kale, and turnips.

When starting from scratch and deciding where to position your garden, opt for somewhere with full sun to avoid the quantity and quality of your crop being impacted. You will also need a well-drained soil, and a space that is free of root competition. If possible, you may wish to find a space close to your kitchen to make it easier to sneak out for fresh produce while you cook.

Incorporate Gyganic for Veggies Fruit & Citrus throughout the soil at planting and cover the treated area with fresh untreated soil and allow the roots to grow down into the fertiliser.

Gyganic is a premium organic based, chemically boosted fertiliser with a complete range of nutrients enabling healthy growth for all of your fruit and vegetables. By adding it to the soil at planting, you are setting your garden up for success by ensuring that your plants have adequate nutrients to establish and develop strong root systems.

Once established, apply Gyganic for Veggies Fruit & Citrus every 8 weeks and GOGO Juice fortnightly.

Mulching with Whoflungdung will also serve your vegetable garden well through winter and provides numerous benefits. A generous layer of Whoflungdung will conserve moisture in the soil, discourage weeds and regulate soil temperature, while also adding nutrients into the soil for both beneficial bacteria and plants to feed on.

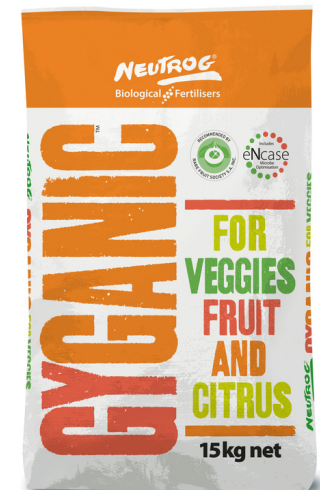
Gyganic was successfully trialed by the members of the Rare Fruit Society, who endorse the product providing gardeners with the confidence to use it in their own gardens.



APPLICATION RATES

Apply Gyganic evenly to pre-soaked soil around the drip line of the plant, avoiding contact with foliage or flowers. Water again well.

Established trees and other fruiting plants—apply 100g (1 scoop) after signs of new season growth, and every 8-10 weeks thereafter throughout the growing season. Increase amount dependent on plant size, to a maximum of 500g per application.



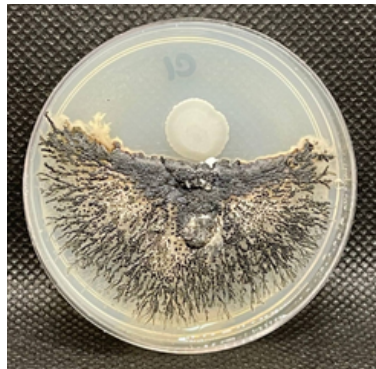
R&D / Inhibition, Solubilization & Auxins

The R&D team at Neutrog have spent a number of years examining and screening soils from around Australia seeking microbes capable of increasing nutrient use efficiency, plant health and disease suppression.

During our screening process we have found over 50 different isolates capable of reducing or in many cases completely suppressing the growth of numerous fungal pathogens including *Fusarium oxysprum*, *Rhizoctonia solani*, *Sclerotinia sclerotiorum* and *Colletotrichum coccodes* amongst others as well suppressing the growth of oomycetes pathogens such as *Pythium* and *Phytophthora*. You may remember in our April newsletter we showed you on of these plates, showing the ability of bacterial isolate C1 to inhibit the pathogen *Colletotrichum*.

Our latest product, POPUL8, contains a wide variety of these specific purpose bacteria which have been individually chosen to maximise both the range of functions they are capable of performing as well as their ability to be effective in a broad spectrum of geographical locations and soil conditions.

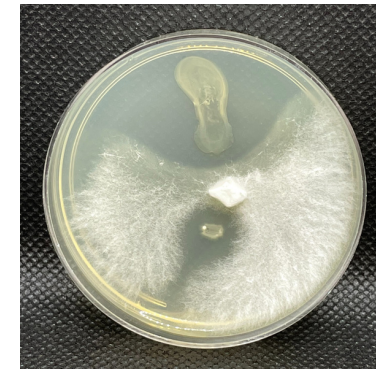
Below are actual examples of the tests performed by Neutrog's laboratory that demonstrate plant pathogen inhibition and suppression along with nutrient liberation:



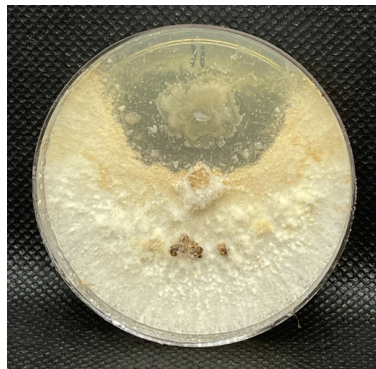
Inhibition of the pathogen *Colletotrichum coccodes* (Black Dot from potato) by bacterial isolate C1 but not C2 (which has been overgrown by the pathogen).



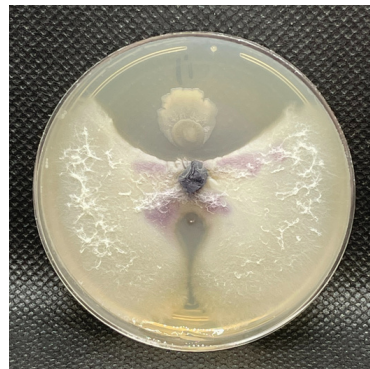
Inhibition of the pathogen *Pythium* (isolated from strawberries) by bacterial isolate iE and iA.



Inhibition of the pathogen *Sclerotinia sclerotiorum* (isolated from tomato) by bacterial isolates i1 and i5.



Inhibition of the pathogen *Rhizoctonia solani* (isolated from tomato) by bacterial isolate i1 but not i5.



Inhibition of the pathogen *Pythium* (isolated from strawberries) by bacterial isolate i1 and partial inhibition by i5.



Liberation of potassium by bacterial isolate SH1/S3/18/K.

R&D Continued...

Fabric Composting Trials Underway

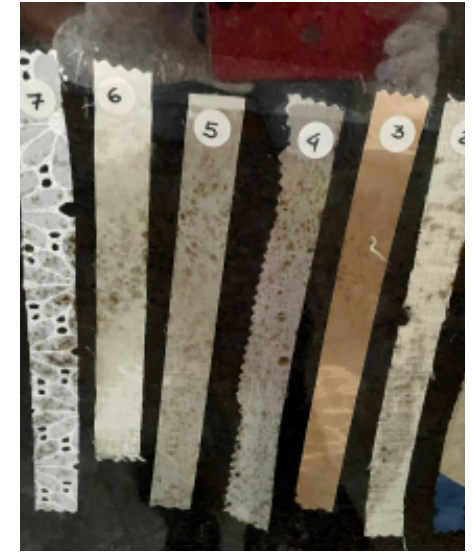
In conjunction with research that immediately impacts product development or improvement, the Neutrog R&D team also take on individual projects that look at the wider process of microbiology and composting.

One such project is currently underway which relates to the ability of certain fabrics to biodegrade in a compost/waste environment.

Fabric waste represents an increasing percentage of landfill and so forward thinking fabric manufacturers and fashion designers are now not only thinking about the sustainability of a garment's fabric construction (i.e. the chemicals used in its manufacture, its percentage of included recycled material etc.) but also its ability to breakdown should it end up in landfill.

This particular project involves a South Australian based business, with a mindful approach to global fashion and the future demand for a more sustainable lifecycle for garments.

We look forward to telling you more about the trial and the brand behind it, in future newsletters.



A New Freeze Dryer for Preserving Neutrog's Microbial Collection

The collection of soil samples from around Australia and the isolation and identification of bacteria and fungi has become a significant part of Neutrog's R&D process which we look to preserve using a new piece of equipment recently commissioned in the laboratory known as a Freeze Dryer (Lyovapor L-200 Freeze Dryer).

Freeze drying, or lyophilisation, is a commonly used method for preserving a range of items including food and pharmaceutical product. In Neutrog's case, Head of R&D Dr Uwe Stroehrer and Research Assistant Juhee Hada will be using it for preserving bacterial and fungal cultures that may be needed for future research.

This process involves placing a frozen sample under a vacuum to remove water or other solvents. The liquid within the organisms is turned into a gas without going through a liquid phase.

After being freeze dried, the dry microbes are stored in glass vials under a vacuum within the freeze drying unit. The microorganisms will be in a state of suspended animation that can be woken up and regrown even after many years have passed.

"This is best described as our very own 'bug bank'. The freeze drying of our microbial collection is essential to ensure that we have access to the same bacteria and fungi for many years to come." says Dr Uwe.



The Expert's Choice / Bendigo Goldfields Chrysanthemum Association



We all know and love the traditional Mothers' Day flower - the beautiful chrysanthemum. If this is your preferred Mothers' Day gift, then now is the time to be looking at the range your garden centre or hardware store have available. And what a range it is!

Chrysanthemums originated in China and today they recognized throughout the world and grown by many.

Chrys' are divided into two main groups; garden and exhibition. From that there are numerous varieties including disbuds, spider and pompom - all within a superb colour range. Garden varieties are tough, hardy plants which generally cope quite well being left to their own devices, which can make them very satisfying to grow, for little effort. They don't require fussing over by way of staking or needing support to cope with the vagaries of the weather.

Exhibition varieties were recently featured by the members of the Bendigo & Goldfields Chrysanthemum Association in their annual Chrysanthemum Australian Championship. The members have spent hours upon hours to get these gorgeous blooms to look like this. If you'd love to know more about how to grow such beautiful flowers, then consider joining the group as they welcome new members.



Neutrog's Helen Lovel (left) attended the show to assist with judging today alongside Jim Fletcher (middle) and Rod Clarke (right) and some of the experts present told her that their preferred fertiliser for their chrys' is Sudden Impact for Roses.

If you are lucky enough to have been gifted a bunch or pot of chrysanthemums this Mother's Day, prolong their vase life by cutting the stems on a slight angle to allow them to take up more water. By adding a couple of drops of Gogo Juice into your vase water and changing the water every few days- you will be able to enjoy your chrysanthemum display for at least a couple of weeks.

Some more options when it comes to keeping chrysanthemums include keeping them potted, or displaying them in your garden. In both cases, apply Gogo Juice fortnightly and feed with Sudden Impact for Roses every 4 weeks for pots and every 6 weeks in the garden. You will continue to be rewarded with beautiful blooms around Mothers Day.



Terry Brissett / The Rainforest Garden



From coastal gardens to the more contemporary minimal gardens, the outdoors can be a space for innovation where you can create the space of your dreams (climate permitting of course!).

Terry Brissett from Lilli Pilli did just, creating a 'home-sized' rainforest that has been a dream since childhood.

After purchasing their Lilli Pilli property over 35 years ago, Terry jumped at the opportunity to start a rainforest garden amongst the already established trees and surrounding native bushland. Terry had a love for rainforests since he was a child and was determined to create his own.

"Whilst I was capable with landscaping, my gardening skills left a lot to be desired. I learnt so much from Dr Uwe Stroehrer on The Garden Clinic segments with Graham Ross. Since then, my garden has really flourished."

"With a business to run I didn't have a lot of spare time, but nevertheless I made good progress and created a good canopy, built a small watercourse where frogs appeared within weeks and made good progress on the understory planting," said Terry.

The property is located on a slope which was originally used by builders to dump rubble. This was a blessing for Terry who used the materials to create the base structure of the garden including rock work for retaining walls, paths, and streams.

In January 2020 a mini cyclone impacted the property resulting in the loss of several trees. "With the help of a good arborist we were able to save many of the trees, and I have since planted over 50 new tube stock trees."

Since then, the garden has made a tremendous recovery, resembling the rainforest garden that Terry had set out to achieve. The garden is complete with walkways, rockfaces, ponds, and plenty of seating throughout.

Tree canopies provide protection and shade to understory plants throughout the garden. The dense planting has provided a haven for wildlife, complete with streams, ponds and a waterhole throughout and at the base of the property.



Epiphytes and lichen cover tree trunks and rocks indicating good air quality, where Terry has also left space for native orchids to bloom.

“Whilst I originally created it to retain native flora and fauna, I now realise that it has great therapeutic value.”

From reading Neutrog’s newsletters and listening to Dr Uwe on The Garden Clinic with Graham Ross, Terry has added a range of Neutrog products to her maintenance routine.

“From the outset I wanted a reasonably low maintenance garden. I use Kahoona to feed my camellias and gardenias, Bush Tucker on the trees to maintain a healthy canopy, and GOGO Juice on my lawns to keep the brown patches at bay and the hedges intact. But if I had to pick a product that I could not do without, it would be Whoflungdung – everything flourishes with it and there are less weeds.”

Designing a themed garden can involve a lot of work, but as you can see in Terry’s garden, the end result is well worth it.



Rare Fruit Arboretum / Autumn Mulching & Plentiful Pears

We are now in the full swing of autumn with the chilly mornings and evenings reminding us that winter is not far off either; and, wonderfully, there's still fruit in our arboretum.

To keep these trees protected for winter there has been extensive mulching with Whoflungdung. Mulch will help to keep the soil 'warm' for as long as possible in autumn, protect it from frost and erosion from heavy rainfall and then help with weed suppression as spring arrives.

Whoflungdung was spread over the site by hand by the team from Adelaide Hills Lawns & Gardens. In the above photo you may have noticed that there is a ring around the base of each tree. This is done to prevent bark rot, and it is a technique that should be used when mulching any area of your garden.

In Arboretum 2 we were delighted with two late fruiting pear varieties. Howell and Durondeau.

Howell, is an American heritage variety of pear which was found by Mr. T. Howell of New Haven, Connecticut in 1840. The tree is large, vigorous and spreading. Howell is a heavy bearer. The fruit is medium to large with a typical pear shape. It has a lovely light yellow and often finely shaded skin, which is thickly sprinkled with small lenticels and some russet patches. The whitish flesh is juicy and melting, to which our marketing co-ordinator Megan, can attest. Interestingly, Howell ripens to a better quality in warmer regions such as South Australia.

Looking (and tasting) fantastic is the Durondeau pear which has a pronounced sweet-sour taste. Don't Megan's pics make you want to taste it! This was developed by Belgian grower, Charles Louis Durondeau in the early 19th century.

This pear has a moderate to medium growth with thin, open and pendulous twigs and branches. The fruits are medium to very large, with a greenish skin and firm flesh. The tastiest pears often have a red tinge along one side. The Durondeau pear has a limited shelf life and should be eaten before the moment of maximum ripening. When the skin turns yellow, the flesh becomes less solid, slippery and bland and the typical tartness disappears.

It has a short season which lasts no more than a month. The fruits are typically at their peak in April, although this varies depending on the weather.



Staff's Choice

David Ellis, *Head of Special Projects and Manure Supply at Neutrog*



Do you ever wonder what products the staff at Neutrog choose? Which ones we use in our own gardens?

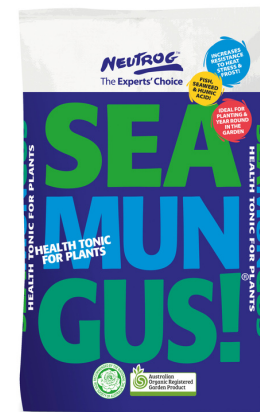
Truth be told, with access to all the products, both in the warehouse and in development, we are spoilt for choice, but we do each have favourites depending on our individual gardens, so we thought we'd explore that in our upcoming newsletters and give you an insight into what we use – and why.

Our inaugural 'Staff Choice' comes from David Ellis who has been with Neutrog in various roles for over 13 years.

David resides in Clayton Bay on 70 acres of land that was previously grazing and cropping land. Over the years, David and his family have planted over 30,000 natives to provide habitat for the local echidnas, kangaroos and many species of birds.

"I recommend Seamungus, especially for your winter fertilising."

"We have always used Seamungus pellets at planting and yearly for about the first 3 years on all our plantings to give them a good start in life. Our soil goes from clay to sandy with limestone areas in the mix and we find that Seamungus works well for our mixed soil types."



Year Round Fertilising Guide / Winter

The plants in our garden are just like animals and humans - they grow best when they are well-nourished and fed regularly. Happy healthy plants don't get sick and are less likely to be affected by heat, frost, pests or diseases, which is going to make you a much happier gardener too!

Year round fertilising is not about applying more fertiliser but rather applying smaller amounts more regularly. Consider taking the quantity recommended for feeding your plants for the season and dividing it into equal parts, and apply 1 part in each month of the season.

At this time of year when there's not much happening above ground, we recommend applying Seamungus to your entire garden (there's still plenty happening below the ground). There are numerous benefits for doing this - Seamungus contains natural plant growth hormones which encourage strong root development (resulting in a greater root surface area for plants to take up nutrients), it encourages beneficial bacteria to populate and stimulate activity in the soil, and the seaweed component helps strengthen plant cell walls to cope with winter stress - particularly frost.



Year round fertilising for year round health

Like humans and animals, plants require regular feeding throughout the year – at least once in each season.

Happy, healthy, well nourished plants are more resistant to pests, diseases, heat stress and frost.

PLANTING IN WINTER

Winter is the perfect time for planting! Use Seamungus, Rapid Raiser or Rooster Booster for any new plantings. Make sure the hole is at least twice the size of the root ball. Throw some pellets into the hole and mix through the soil, and water in with liquid Seamungus or GOGO Juice.



NATIVES

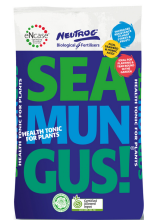
Established Australian natives, including phosphorous-sensitive natives such as grevilleas, banksias & non-natives in the Proteaceae family will all enjoy being fed during the winter.

There are some gorgeous grevilleas, acacias and hakeas to choose from now - your local nursery has an ever-increasing range of these beauties.



HEDGES

Hedges love a fertiliser which has a higher nitrogen to potassium ratio, so during the growing season we recommend applying Sudden Impact for Lawns. In winter however, it's best to apply Seamungus, watered in with GOGO Juice. This will ensure great growth when spring arrives.



Once it is released, our new product 'BANG BANG for Hedges' will be recommended for fertilising your hedges.

ACID LOVING PLANTS

Now is the time to feed azaleas, magnolias, rhododendrons and blueberries with Kahoona, as they are either in bud or coming into bud over the coming weeks. The higher potassium to nitrogen ratio within Kahoona plays a crucial role in enhancing flower development, whilst the boosted levels of iron and magnesium help maintain healthy green foliage, aiding in preventing the yellowing leaves which are often seen in late winter and early spring. All other acid loving plants such as camellias, daphne & gardenias will benefit from an application of Seamungus now, and followed up with Kahoona in spring.



Year Round Fertilising Guide / Winter

ESTABLISHED FLOWERING PLANTS

Now is the time to give your flowering plants (including roses, carnations, daisies, lavender and all other flowering plants) their winter feed of Seamungus before spring arrives. It will give them a boost when weather warms up. Make sure you water in well with GOGO Juice to activate the microbes in the soil.



ESTABLISHED FLOWERING, FRUITING PLANTS AND ORCHIDS IN POTS

Sprinkle some Strike Back for Orchids over any plants in pots that flower in winter, such as begonias and hellebores. For your plants in pots that don't flower in winter such as fuchsias, they will appreciate a feed of Seamungus.



Many Cymbidium orchids are setting flower spikes now. Begin to feed 2 months prior to flowering and continue to do so whilst they're in flower. The pelleted version is used monthly and the liquid fortnightly.

ESTABLISHED NON-FLOWERING PLANTS INCLUDING LAWNS

To get that beautiful lush growth which will be the envy of all, feed and water regularly. As we move into cooler weather, you can set your mower a little lower if you wish. Fertilise with Sudden Impact for Lawns and water in with GOGO Juice; sit back and wait for the compliments!



Now is a great time to fix bare patches in your lawn. Top dress the patches with Seamungus and spread lawn seed over the area. Water it in using GOGO Juice.

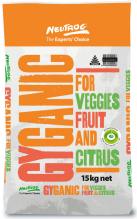
VEGETABLES, FRUIT AND CITRUS

Some winter vegetables that grow well in drier parts of Australia include broad beans, broccoli, cauliflower, lettuce, peas, potatoes, garlic and spinach.

An application of Seamungus will give your veggies and herbs a great start. You can also incorporate Gyganic for Veggies Fruit & Citrus throughout the soil at planting. Cover the treated area with fresh untreated soil and allow the roots to grow down into the fertiliser. Apply Gyganic for Veggies Fruit & Citrus every 8 weeks and GOGO Juice fortnightly.

Winter is a perfect time to be selecting fruit trees for your garden. There are so many available including dwarf varieties which are ideal in large pots. At planting time, dig the soil to a depth 1 and 1/2 times the depth and twice the width of the pot or root ball of the tree you have chosen.

Dig plenty of organic matter through the soil. Rapid Raiser and Seamungus are perfect for this. Keep them well watered once they start to leaf up. Water in with GOGO Juice and apply monthly thereafter.



SOIL CONDITIONING

GOGO Juice provides a huge boost of the living microbiology necessary for your soil and plants to perform at their optimum level, increasing their ability to resist pests and disease, and to withstand heat and frost stress.

The microbiology in GOGO Juice promotes plant growth as well as stimulating and improving root growth and development



MULCHING

There are numerous benefits of applying Whoflungdung during winter, such as:

- It introduces a wide diversity of beneficial bacteria.
- Beneficial bacteria act as a deterrent to pathogenic bacteria.
- Weed suppression.
- Moisture retention.
- Encourages earthworms that aerate the soil and move nutrients deeper in the soil profile.
- Improves water and nutrient-holding capacity.
- Reduces, if not eliminates, nitrogen drawdown.
- Puts organic material into the soil.
- Regulates soil temperature.
- Prevents erosion from heavy rain.

Improves water absorbancy.



More From Neutrog / Find out more and what's in store!



In addition to our newsletter there are plenty of ways to keep in touch with us or to find out more. Below you will find link buttons to our Neutrog TV page (which is hosted by YouTube) where you can find a range of video's as well as copies of Dr Uwe's weekly chats with Graham Ross.

On Facebook we regularly post gardening tips, stories from gardeners who use Neutrog products to stunning effect, like Melissa from Smokin Heights. We also feature staff news and videos from around the site. If you visit the page, make sure you click Like and Follow to ensure you keep seeing all the updates.

See you in June!

The Neutrog Team

Our Partners

Over the years Neutrog has collaborated with many plant societies that have trialled and subsequently endorsed some of our products. These product endorsements provide retail staff and home gardeners with the confidence to use and recommend Neutrog products.

With a combined membership base of over 10,000, some of these endorsing societies include (click on a logo to head to their website):



and The Orchid Club of South Australia.

We never have enough room in our newsletters to share all of our inspirational stories and tips from our gardening community, but they do appear on our Facebook and Instagram pages regularly...why not join us there?

