



The Pooh Bah News

Dear Pooh Bah Club subscribers,

With a warm and unusually humid start to the new year, it has been a busy time in the garden to keep on top of all the growth and support plants with all the nutrients they need. It is no secret that happy, healthy, well-nourished plants are more resistant to temperature stress, pests and disease which is why we recommend summer fertilising as part of your year round programme. If you're yet to feed your plants this season, we have included our best tips for fertilising when the weather is hot and also some things to watch out for if your garden isn't used to humidity.

This month we also explore the magnificent collection of corpse flowers at the Adelaide Botanic Garden, receive an update from hedging expert John Flens, look at some new equipment being installed at Neutrog, find out more about landscaping from the experts at Adelaide Hills Landscaping & Gardening, and plenty more.

In between newsletters, we encourage you to visit our social media pages for more news and stories. You can also invite your friends to join the "Pooh Bah Club" by forwarding this email so that they can also enjoy this newsletter.

Happy gardening!
The Neutrog Team



Photo of the Month / Corpse Flower, 'Titan arum'



Known for its rare blooms, towering height and pungent odour, the infamous Corpse Flower (*Amorphophallus titanum*) is a sight to behold. The Mount Lofty Botanic Garden houses a collection of these plants behind the scenes for global research and conservation, and the team there were treated to a bloom late last year.

Corpse Flowers are an endangered species from the rainforests of Sumatra, Indonesia. The life cycle of the plant can last more than 10 years, with some of the time spent as a tree-like structure while it stores energy in its underground tuber, ready to produce and support its enormous inflorescence.

The flowering cycle is short, lasting for only 24-36 hours. The crimson leaf-like structure opens to reveal a pointy spadix and hundreds of tiny flowers hidden at the bottom. If fertilised, after a few days the spathe will begin to collapse leaving seeds covered in red fruit to develop over the next 12 months.

The latest inflorescence to open at Mount Lofty Botanic Garden was witnessed by horticultural curator, Matt Coulter.

Standing at over 2m tall and letting off a putrid perfume of rotten meat to attract pollinators, Matt says "the smell is quite complex with a mix of dead rat, strong cheese, fermenting cabbage... The interesting part of the smell is that it pulses to move the smell further away to attract the insects to it. The spadix also heats up to the temperature of a body to attract the insect, with the spathe coloured purple to mimic a dead animal."

"You have to admit, it's one interesting plant and one that I am totally fascinated with. There is so much more to learn."

Corpse flowers are quite the spectacle when they do open, attracting crowds of more than 10,000 visitors to the Botanic Garden in the past.

With current COVID restrictions, to ensure public safety, this inflorescence was not on public display, however visitors can currently see them in their leaf-only form in the Amazon Water Pavilion at Adelaide Botanic Garden.

The recent bloom was narrowly missed by Neutrog's R&D Manager, Dr Uwe Stroehler, who had visited only 3 hours prior to the flower opening. It will take another 2-5 years for it to flower again.



Exciting Future for Neutrog

Buhlmer Coating Machine

2021 came to an exciting close here at the Neutrog factory with the arrival of our new Buhler Coating Machine and frame ready to be installed.

This machine is able to uniformly coat up to 15 tonnes of our fertiliser pellets with up to 3 different customised biological liquids.

For our home gardeners in the future, imagine how your lawn would look if Sudden Impact for Lawns came already coated with GOGO Juice Advanced Biological Formula... not only will it reduce the number of product applications to your garden, but your garden will benefit greatly from the combination.



For our commercial growers in horticulture, viticulture and broadacre production, this represents a significant opportunity to combine our pelleted products with the individual beneficial bacteria and fungi that we have isolated and identified, to address specific needs such as phosphorus liberation, nitrogen fixation and growth promotion.

This new plant signals the realisation of a project that has been years in the planning, and a very exciting start to 2022.

A New Freeze Dryer for Neutrog Laboratory

Another addition coming soon to Neutrog's Laboratory is a Lyovapor L-200 Freeze Dryer. This is a high quality laboratory freeze drying system for a wide range of applications.

Freeze drying, or lyophilisation, is a commonly used method for preserving a range of items including food and pharmaceutical product. In Neutrog's case, Head of R&D Dr Uwe Stroehler and Research Assistant Juhee Hada will be used it for preserving bacterial and fungal cultures that may be needed for future research.

This process involves placing a frozen sample under a vacuum to remove water or other solvents. The liquid within the organisms is turned into a gas without going through a liquid phase.



After being freeze dried, the dry microbes are stored in glass vials under a vacuum within the freeze drying unit. The microorganisms will be in a state of suspended animation that can be woken up and regrown even after many years have passed.

"This is best described as our very own 'bug bank'. The freeze drying of our microbial collection is essential to ensure that we have access to the same bacteria and fungi for many years to come." says Dr Uwe.

Factory Tour

Men's Probus Club of Murray Bridge

In November we were delighted to host the Men's Probus Club of Murray Bridge at the Kanmantoo factory for a tour around the site.

Eager to learn more about our biological fertilisers and the processes used to produce them, the group joined Neutrog's Managing Director, Angus Irwin on a bus to tour the site before being shown around the lab with Dr Uwe Stroehler. The group then enjoyed a light afternoon tea while listening to a presentation from our Customer Relationship Manager, Paul Dipuglia.



With plenty of exciting R&D projects and new products around the corner, it is a pleasure to host groups like the Men's Probus Club of Murray Bridge and share our passion for healthy gardens and biological solutions.

If you are part of a group and have an interest in gardening, we encourage you to get in touch with our team to organise a tour! Bookings can be made by contacting our office on 1800 656 644 or email info@neutrog.com.au

Factory Tour / Auto Collectors Club of Murray Bridge

With R&D and innovation front of mind at Neutrog, we are always on the look out for new ways to manufacture and enhance our biological products.

This piece of coating equipment is the newest addition to our manufacturing process.

In this image, you can see that it is currently off-site being engineered for a frame.



This addition represents a significant step forward in our ability to customise our products and maximise the use of the bugs that we have isolated in the lab by coating the pellets with these liquids.

The machine will have the ability to coat up to 15 tonnes per hour with up to 3 different liquid additives.

We look forward to updating you on this when it is up and running in our factory.

Summer Garden at Neutrog's Kanmantoo Factory

Designed by Cathy Apps from Catnik Design Studio and maintained by the team at Adelaide Hills Lawn & Garden, the front gardens at Neutrog's Kanmantoo factory have come a long way since the last update in winter, 2021.

The trees lining the front part of the garden are full of deep green foliage, and the surrounding plants have also flourished throughout spring and summer. The lawn is looking healthy, and the remaining blooms are a welcome sight for Neutrog staff and visitors.

In particular, the numerous Lagerstroemia 'Natchez' have grown beautifully and have been able to withstand the recent hot and humid days and strong winds. We put this down to our year round fertilising programme which includes regular applications throughout summer.



Growing Great Vegies / Gardens in Abundance



Culinary garden expert, urban farmer and garden designer, Mei Chan has built a strong reputation for smart and eco-friendly gardens that serve a purpose in Melbourne, Victoria.

Two years ago, we featured a story about Mei which resonated with a lot of our readers and so we caught up with her again so see how her garden has been evolving.

Mei's business, 'Gardens in Abundance' is focused on sustainable gardening including edibles, natives and plants that attract bees. From complete garden renovations, to preparing gardens for homes to be put on the market, Mei is dedicated to her craft having graduated with a Certificate in Garden Design from Brunley Horticultural College.

"I'm passionate about designing eco-friendly gardens without the price tag" says Mei.

Previously we had featured Mei's bay tree that she had bought for just \$1 as it was in such poor condition. "I only applied GOGO Juice to improve it's health, and it has far exceeded my expectations with the amount of new growth... it definitely saved my bay tree!" says Mei.

2 years on and her clients' gardens are thriving just like her own. Her urban farm continues to produce an abundance of fruit and vegies, including some unique varieties such as cape gooseberries (also known as paper lanterns), watermelon radish, babaco and purple peppers.

Soil health is a priority for Mei with GOGO Juice being a beneficial part of Mei's garden routine along with Seamungus which Mei considers her staple product. "I recommend it to everyone who grows food!"

"I'm always on the hunt for organic products that improve the soil. I'm a fan of Neutrog for the amount of research and development that's put into each product, and of course the names are clever! I use Seamungus all the time and recommend it to my clients. Keep the products coming!" enthused Mei.

You can find out more about Mei and 'Gardens in Abundance' on her Instagram page and her website.



Lawn Renovation / Adelaide Botanic Garden



The lawn next to the International Rose Garden at Adelaide Botanic Garden covers an area of 1300 square metres.

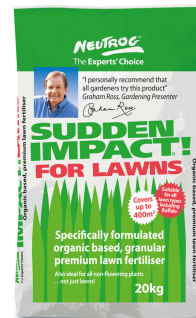
It is a beautiful place to sit and enjoy the garden and it is little wonder that this was the site chosen to host an events marquee throughout the spring of 2021.

Just before Christmas the marquee was taken down and renovation work was scheduled for as soon as possible after the holiday break. Contractors first came to site on a Monday; the dead lawn was removed, and the site levelled.

Horticulture Curator, Andy Hart and his team then applied Seamungus pellets before laying 400sq. m. of Kikuyu over the area where the marquee had been situated. With great attention to detail the team had everything complete in just three days and it's difficult to differentiate between where the old lawn stops and the new begins!

Immediately following the laying of the new turf Andy tells us, "On the new turf, we applied Sudden Impact for Lawns and watered it in with GOGO Juice through our fertigator. It is important to have a biologically active soil and GOGO Juice ensures that we have that. We will water weekly (unless a heat wave occurs and then we'll do it more regularly) and then in about a month or two once the lawn has taken root, I plan to top dress and then apply another dose of Sudden Impact for Lawns which will again be watered in with GOGO Juice."

Neutrog products are used by professionals around Australia to establish and maintain turf in gardens and parks and on golf courses and sporting fields, so if you're looking to create an enviable patch of lawn in your garden, check our website for lawn growing tips and products for every application and time of year.



Sudden Impact for Lawns is an organic based, chemically boosted fertiliser specifically developed for new and established lawns.

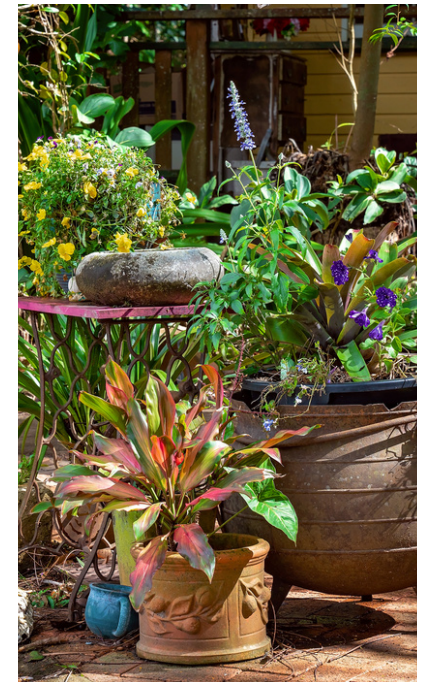
Its high nitrogen to potassium ratio, coupled with its full range of macro and micro elements, including boosted levels of iron and magnesium (the primary nutrients that play a crucial role in the formation of chlorophyll, which is the substance that makes plants green) make this product ideal for all other non-flowering plants such as bamboo, conifers, palms and ferns (including those plants grown indoors).

Summer / Fertilising Tips for Hot or Humid Weather

High temperatures and scorching sun during an Australian summer can be a tough time for your garden, not to mention the humidity that most of Australia has endured for the last couple of weeks.

Good preparation is critical to helping your garden survive the harsh conditions and continue to flourish and fertilising (even in the hot weather) is a great way to nourish and protect them. We have a few tips for you to help with your summer fertilising:

- Prior to fertilising, give your garden a good watering. Do the same after applying the fertiliser as this ensures that the root ball and surrounding feeder roots will be readily able to take up the nutrients.
- Apply fertiliser around the drip line of the plant, the outer edge of where the plants branches hang. This is where the feeder roots are located, which take up the nutrition to the plant.
- When fertilising in the during hot or humid weather, early in the day is best. The plant is much less likely to be under stress from hot conditions, while feeding in the heat of the day can cause damage to your plants.
- Your plants in hanging baskets and pots will also need a feed. Consider positioning into a shady area to feed, and then reposition afterwards. If this is not an option for you, fertilise in the cool of the day instead.
- Summer is the perfect time to stay on top of your liquid applications of Seamungus and GOGO Juice for your entire garden. Regular applications will keep your garden healthy and strong, and able to withstand summer conditions.
- Humidity can cause plants to grow more quickly, which means they may need some extra nutrients to keep them strong and nourished. Consider changing your fortnightly application of liquid fertiliser to a weekly dose at a lesser strength.
- Humidity can also create the perfect environment for fungal disease and plants that are grown in areas that don't typically experience humidity (WA, SA & VIC) can be particularly prone, be sure to look out for these when doing your garden maintenance.



Product of the Month / Strike Back for Orchids Liquid



Don't be fooled by the name! While Strike Back for Orchids liquid was developed for orchids it is actually beneficial for all types of potted flowering and fruiting plants and has recently been updated to Strike Back for Orchids Advanced Biological Formula.

The formula for Strike Back for Orchids liquid has been improved with the addition of specific beneficial bacteria and fungi that suppress pathogens and encourage growth.

The NEW Advanced Biological Formula represents a major R&D project undertaken by Neutrog. This involved gathering soil samples from Australia's best gardens, farms and horticultural operations and screening them for individual microbes.

These microbes were then isolated and identified for their unique characteristics.

In the video below, Dr Uwe Stroehrer discusses the progress of Strike Back for Orchids Advanced Biological Formula which is has been undergoing trials in the Neutrog lab, on bromeliads at the Adelaide Botanic Garden, and by members of orchid societies.

Our in-house trials have shown the pathogen suppressing abilities of Strike Back for Orchids Advanced Biological Formula to be effective after being used on a number of sick orchid plants.

The results as seen in these trials have also been experienced by home gardeners who have reported some impressive improvements in plants in the garden and in pots. Stronger growth, more flowers, and bringing plants back to good health... Strike Back for Orchids liquid could be exactly what the plant doctor ordered!



APPLICATION RATES

Begin by shaking the bottle well before use.

Dilute 40mL (1 capful) of Strike Back for Orchids Liquid in 6-8 litres of water (you can dilute at a stronger or weaker rate as required).

Apply the mixture to any potted flowering or fruiting plants once a week. Apply throughout the year, particularly throughout the growing season to ensure a plenty of flowers.

The Expert's Choice / Hedges with John Flens

We're hedging our bets that our regular readers will remember John Flens from our article on hedging in 2021.

John is a passionate but humble expert hedgeman based in Victoria and our attention was captured by this unique cyprus hedge that he had created for a client using a 'cloud' technique. This hedge which winds gracefully alongside a driveway looks almost impossible to conceive - let alone maintain. In last year's story, it featured dusted with snow which only served to highlight its rolling form.

Since early spring of 2021, John has been trialling BANG BANG for Hedges over the past six months with his clients, John and Paul, reporting to Helen Lovel from Neutrog,

"BANG BANG is marvelous and really noticeable to me so far as buxus which have never had better nor stronger healthy growth."

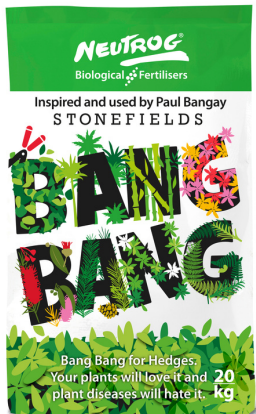
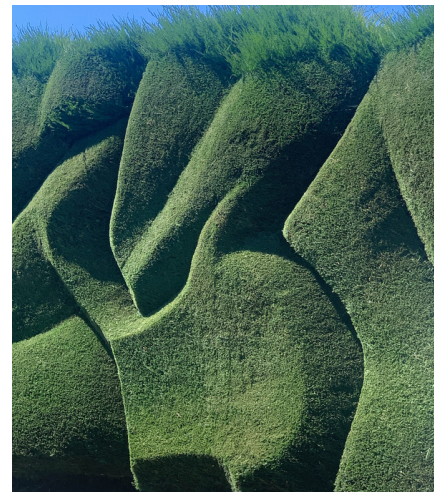
Established hedges can add structure and, depending on their size, scale to any garden and create a framework for both relaxed rambling gardens or traditional planting.

The trick with successful hedges is based on choosing the correct plants for the climate and style of hedge and then understanding their requirements for feeding and risk for pests and disease. To combat these last two factors, Neutrog have been working on the development of BANG BANG, a dual purpose product.

The organic base is chemically boosted to support the individual plants cope with the 'stress' of regular pruning which stimulates the plant into producing new growth regularly. The addition of beneficial bacteria and fungi then work to suppress pests and disease that can stress hedges in their compact growing environment.

We're looking forward to keeping in touch with John to hear how his trial of BANG BANG continues into autumn and winter.

Hedges aren't the only passion of John's, with his interest in micro flowers proving that 'beautiful' doesn't necessarily have to be 'big'. These minute and dainty displays make for a dramatic size comparison to some of John's other projects, perfectly demonstrated with a golden thimble next to each micro flower.



Adelaide Hills Lawns & Gardeng



Co-owners of Adelaide Hills Lawns & Gardens, Jarrad Tait and Luke Timmins joined forces in 2015. They have since built a solid reputation and a thriving business providing Adelaide and Adelaide hills residents and commercial premises with valuable garden services for the last 7 years.

AHLG was founded in April 2013 by Jarrad Tait, who wanted to challenge the way an average lawn and garden maintenance company operated by offering a more personal, high end and stream-lined service.

In late 2013, Luke Timmins joined Jarrad as his first employee. Jarrad and Luke could see the endless possibilities and opportunities AHLG could create and it was this shared vision and the team's hard work that catapulted the business into rapid growth. In 2015, Jarrad and Luke formed an official partnership and from there things flourished.

AHLG pride themselves in offering high quality lawn and garden maintenance services, landscaping projects and commercial maintenance all by their motto "we'll get our hands dirty so you can keep yours clean".

They have been one of the fastest growing South Australian companies, and their extensive experience has been recognised with Luke being awarded the 2021 SA Young Entrepreneur of the Year by Business SA.

From high-end garden and lawn maintenance to larger landscaping projects and commercial maintenance, AHLG specialise in large residential landscaping projects transforming outdoor spaces into cutting edge, dreamy sanctuaries – something that Neutrog have experienced first hand with the upgrade of the weighbridge, warehouse, and front gardens at our Kanmantoo factory.

Their work has also extended to popular shopping destination such as Westfield and a variety of wineries including Barristers Block, Bird in Hand and The Lane Vineyard.

The Commercial Maintenance team at AHLG say, **"Because of the rich atmosphere at Neutrog, not a huge amount of fertilising is needed to create a lush garden. Through our regular maintenance and a good automatic watering system, our basic fertilising program of Sudden Impact for Lawns quarterly, Seamungus to the garden beds quarterly, and fresh Whoflungdung mulch when required, the Neutrog outdoor space is flourishing!"**



Neutrog's most advanced biological product, POPUL8 continues to be used in trials with R&D Partner Elders in advance of it's wider release in 2022.

National Category Manager Specialties at Elders, Tom Shearer sent in these photos showing some of the effects that POPUL8 has had on a capsaicum crop, in an ongoing commercial trial.

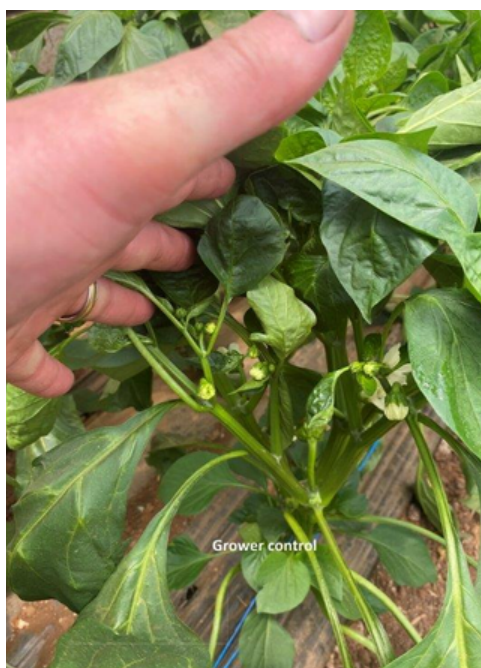
POPUL8 has been specifically developed for commercial growers looking to utilise the benefits of individual bacteria and fungi in inhibiting pests and disease, increasing nutrient availability and promoting growth.

These interim results are an exciting development in the trial which coincides with other trials also being conducted in lettuces, apples, vineyards and table grapes.

Tom reported that the most remarkable aspect to date was the distinctly noticeable improvements within 4-6 weeks of application — with the capsicums, there is better colour, more flowers, less wilting and advanced growth.

In the lettuces, similar results have been recorded with, better colour, leaf formation and advanced growth.

Clearly some very positive early signs and we look forward to seeing how these trials progress.



Grower Control (no product added)



POPUL8

About POPUL8 - Developed and manufactured exclusively by Neutrog, POPUL8™ is an Advanced Biological Formula, that contains a base microbiome of 200+ naturally selected species of bacteria and fungi. In addition, a further 40 specially selected bacteria and fungi have been identified, isolated and added for their specific purpose and beneficial characteristics. These include bacteria and fungi capable of suppressing plant pathogens, producing plant growth hormones and enhancing the liberation of nutrients such as potassium and phosphorous. POPUL8 is designed to not only enhance plant growth and nutrient cycling but also to populate and occupy the biological space in the soil and on the plant roots which may otherwise be an available space for plant pathogens to inhabit...Hence it's name POPUL8

Canna Lilies / A Vibrant, Tropical Delight



Canna Lilies or 'Cannas' are a beautiful plant to add some colour to your garden display. With blooms in vibrant pops of red, orange, yellow and pink shades and deep green foliage, they make perfect tropical backdrop or border.

Glen from the southwest of Victoria is a breeder of new cannas and has had a vast array of many different canna cultivars over many years and he contacted us to relate his experience in transitioning to Whoflungdung for the mulching of his garden beds.

Glen's property is next to a volcano, so the soil is already very good.

"I had read a bit about Whoflungdung and actually used it last year in minimal quantities on another area of the garden.

And after the results I got from using it, this year I went all out and purchased a pallet load to repeat the results! I don't use any other products but have access to chicken manure and straw which I use on other parts of garden. Never have I seen them look so healthy and flower so well.

They are dramatically early, and I have never seen the like in my 30 years of growing cannas. The foliage looks so healthy and the colours are really standing out."

Glen's nature strip even got the Whoflungdung treatment and he comments, "My nature strip gets pretty hot and dry. It gets minimal water and I have chosen plants that can stand up to heat and adding the Whoflungdung seems a perfect partner. Thanks so much for making this product. I think I will be purchasing three pallets of it next year and I will extend the growing area!! I am only a small grower and seller but expanding."

Cannas are a tropical perennial plant which can grow in a wide range of climates. They tolerate many soil types but will really perform when Rapid Raiser or Seamungus are incorporated throughout the soil when planting.

When planting, plant the rhizome just below the surface. Cannas come in several sizes and are ideal screening plants and also look fabulous when planted en masse. In a colder climate they will die back, whereas in tropical areas they will generally remain evergreen. Keep them well watered and a regular liquid feed with Strike Back for Orchids liquid or pellets and you will be well rewarded.

If you'd like to contact Glen to find out more about his beautiful flowers, you can do so by clicking the green button below.



Grasstrees Australia / Saving Australian Grasstrees

As more people are discovering the tranquillity of country living in and around the outer edges of Perth's hills and surrounding bushland, extra land is being cleared for rural living and associated services. Some of the casualties of clearing for development have been the unique Australian grasstrees (*Xanthorrhoea Preissii*) and Zamia palms (*Macrozamia Riedlei*). Many of these plants are hundreds of years old and one business has taken on the challenge of rescuing this precious resource.

Grasstrees Australia have been rescuing the endangered Western Australian native Grasstrees and Zamia palms for over 30 years under license from the Department of Biodiversity, Conservation and Attractions. The last time we featured them was back in 2015 while they were based on a 4-hectare Wattle Grove nursery.

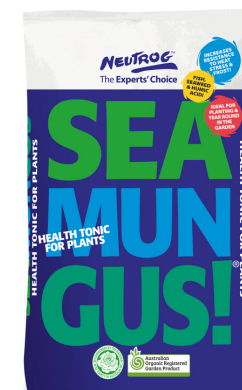
They have since made the move to a new space in Middle Swan, in the heart of the beautiful Swan Valley. They have developed a state of the art nursery facility tailored for their specialised task in rescuing and nursery stabilising these amazing plants, complete with a brand new Retail Nursery for the public to visit.

The process used by Grasstrees Australia to extract, transport and nurture the trees has been perfected over many years. Once extracted from their natural habitat, the plants are transported to their nursery where they are nurtured for 12-18 months. This process ensures the plants are nursed through their transplant shock phase and develop a healthy new root system prior to relocation.

In an interesting turnaround, a number of the rescued trees are replanted in their original environment where they were first rescued from, as developers incorporate the native plantings back into their development plans. The remainder are supplied to the public, government projects, land and property developers, local councils, nurseries, and the interstate and international export market.

The experienced team at Grasstrees Australia are best known for their high transplant success rate. Since trials back in 2011, Seamungus has become the major element in the development of new root systems in the nursery stage and the installation process.

Seamungus was tested extensively in the nursery with the results giving Justin, Leanne and their team the confidence to use it on a commercial basis and recommend it to their clients for ongoing fertilization of grasstrees during their establishment.



'A Tale of Tomatoes' by Andrew Brown

One of the genuinely enjoyable parts of working at Neturog is hearing directly from gardeners from all around Australia.

This month, Lisinda from our team heard about the remarkable gardening friendship that developed between a member of the Rare Fruit Society of South Australia Des, and his neighbour Andrew. Following that conversation, Andrew sent us this letter and we are delighted to share it with you.

"A long time ago when I had brown hair (as opposed to greying) we landed in Ingle Farm.

Ingle Farm is a place of loam, clay and not a lot of goodness in our soil. Years have passed by and nothing has worked until a man arrived... Des Kerr... a new neighbour who brought about news.

He spoke in a different language, tales of flung dung, boosted roosters, humungus... make that Seamungus, and mixed that one up with Gyganic just to name a few. With all of this new information, it is safe to say that Des was a rare fruit!

Over failures, we listened and translated the strange names and applications would be applied... no wonder my hair was going grey.

My plants started to thrive! It was a miracle... these strange products had such a 'sudden impact'.

In our 10th or 11th year we got some news from out east. They were offering Dead Horses and Human Beans to try?

Taking on the challenge, a vegie garden would be made and split into 3 sections - one part for Gyganic, one part for Dead Horse and the final part for Human Beans. We waited and watered and eventually small tomatoes began to grow. The truths that Des had told would come true, with tomato the size of a slice of bread. The tomatoes reached the top of the stakes and found trees to climb. Fruit appeared and grew and grew...big enough to feed both Human Beans and live horses. It was true, they were Gyganic... I mean gigantic.

There ends this true tale, every word is true but the final part remains with Des Kerr, a quiet man with deep wisdom. I did think our tomatoes were good until I took a look among his excellent crop, all fed with Neutrog and TLC. Walking away, I was thankful for the day so long ago when this man appeared and spoke in his own words... it was he who taught me to flung dung Gyganically!"

Thank you Andrew for telling us your story and letting us share your clever way with words!



Year Round Fertilising Guide / Autumn

While it still feels like we are in the midst of summer, preparing for feeding plants in autumn means you will have everything to hand when then temperature begins to dip. The plants in our garden are just like animals and humans - they grow best when they are well-nourished and fed regularly. Happy healthy plants don't get sick and are less likely to be affected by heat, frost, pests or diseases, which is going to make you a much happier gardener too!

Year round fertilising is not about apply more fertiliser but rather applying smaller amounts more regularly. Consider taking the quantity recommended for feeding your plants for the season and dividing it into equal parts, and apply 1 part in each month of the season.

This approach when used in autumn will allow your plants to benefit from the warm sunny days, warm soil temperature and cool dewy mornings. However, look out for those random warm days that March can bring that can still lead to heat stress in your garden. Any stressed plants would love some help to recover, so applying products rich in seaweed and organic matter like GOGO Juice or liquid Seamungus can help improve your soil's water-holding capacity and the plant's ability to recover from stress.



Year round fertilising for year round health

Like humans and animals, plants require regular feeding throughout the year – at least once in each season. Happy, healthy, well nourished plants are more resistant to pests, diseases, heat stress and frost.

PLANTING IN AUTUMN

Soils are generally still warm in March, which will help any new plants to develop roots and get a good head start on winter. More importantly, the roots they develop now will be the ones they rely on when summer comes around again, so you want them to develop well.



When planting during autumn, use 100% certified organic Seamungus, Rapid Raiser or Rooster Booster in the bottom of the hole and then water in well with GOGO Juice.

NATIVES

Australian natives, including phosphorous-sensitive natives such as grevilleas, banksias & proteas will all enjoy being fed during the autumn. Apply Bush Tucker to your winter flowering natives and water in with GOGO Juice to promote root development.

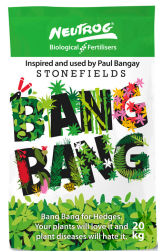


Winter-flowering natives include heathland plants, grevillea, hakea and wattle will bring some colour to your garden and the birds and bees will love them too.

HEDGES

Hedges love a fertiliser which has a higher nitrogen to potassium ratio, so during the growing season we recommend applying Sudden Impact for Lawns. Water in well with GOGO Juice, which will ensure you are populating your soil with beneficial bacteria. By “embracing the bugs” with GOGO Juice, you'll be making sure that the bugs eat the organic fertiliser, which will ensure an even better result.

Once it is released, our new product 'BANG BANG for Hedges' will be recommended for fertilising your hedges.



Year Round Fertilising Guide / Autumn

ACID LOVING PLANTS

Camellias, gardenias, rhododendrons, azaleas and gardenias are all acid loving plants and feeding now with Kahoona will satisfy any their nutritional requirements without altering the pH of your soil. Kahoona is an organic based, chemically boosted fertiliser, specifically developed to enhance the growth and flower development of all acid loving plants. It's also great for blueberries!



ESTABLISHED FLOWERING PLANTS

Including roses, carnations, daisies, lavender and all other flowering plants. Now is the time to feed your roses and all other flowering plants (except natives) with Sudden Impact for Roses. Watering in with GOGO Juice will encourage a faster uptake of the nutrients by the plant. Pop some around your perennials too.



Sudden Impact for Roses is ideal for all flowering plants, not just roses. The balance and ratio of nutrients combined with the very best of raw materials are the secret to its success.

ESTABLISHED FLOWERING, FRUITING PLANTS AND ORCHIDS IN POTS

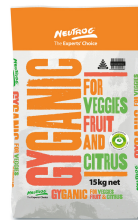
Including orchids and any flowering plants in pots, sprinkle some Strike Back for Orchids over any potted colour this season, as it's suitable for all potted fruiting and flowering plants, not just orchids. If you do, you'll be rewarded with cascades of colour over autumn and winter.



VEGETABLES, FRUIT AND CITRUS

Lightly tip-prune citrus trees to encourage new growth and spread Gyganic for Vegies, Fruit and Citrus around the drip zone of the plant. Apply Gyganic again after 8 weeks.

Gyganic for Veggies Fruit & Citrus is specifically developed to enhance fruit size, quality and taste. It is a premium organic based, chemically boosted complete fertiliser with the full range of nutrients in an organic form, coupled with boosted levels of nitrogen, phosphorus, potassium, iron and magnesium.



ESTABLISHED NON-FLOWERING PLANTS INCLUDING LAWNS

To get that beautiful lush growth which will be the envy of all, feed and water regularly. As we move into cooler weather, you can set your mower a little lower if you wish. Fertilise with Sudden Impact for Lawns and water in with GOGO Juice; sit back and wait for the compliments!

Now is a great time to fix bare patches in your lawn. Top dress the patches with Seamungus and spread lawn seed over the area. Water it in using GOGO Juice.

SOIL CONDITIONING

GOGO Juice provides a huge boost of the living microbiology necessary for your soil and plants to perform at their optimum level, increasing their ability to resist pests and disease, and to withstand heat and frost stress.

The microbiology in GOGO Juice promotes plant growth as well as stimulating and improving root growth and development. GOGO Juice should be applied monthly to all garden and lawn areas.



MULCHING

Applying mulch to your garden at this time of the year will not only help prevent new weeds from growing and keep the soil temperature more constant, but it will also give your plants a gentle nutrient boost.

- It introduces a wide diversity of beneficial bacteria.
- Beneficial bacteria act as a deterrent to pathogenic bacteria.
- Weed suppression.
- Encourages earthworms that aerate the soil and move nutrients deeper in the soil profile.
- Improves water and nutrient-holding capacity.
- Reduces, if not eliminates, nitrogen drawdown.
- Puts organic material into the soil.
- Regulates soil temperature.
- Prevents erosion from heavy rain.
- Improves water absorbency.



More From Neutrog / Find out more!



The entire team at Neutrog would like to wish you and your families a very Merry Christmas and a Happy New Year full of good food, great company and plenty of gardening. Be sure to keep an eye out for our special holiday newsletter in January, as we look back on some of the best stories from 2021.

In addition to our newsletter there are plenty of ways to keep in touch with us or to find out more. Below you will find link buttons to our Neutrog TV page (which is hosted by Youtube) where you can find a range of video's as well as copies of Dr Uwe's weekly chats with Graham Ross.

On Facebook we regularly post gardening tips, stories from gardeners who use Neutrog products to stunning effect, like Adam and his lawn. We also feature staff news and videos from around the site. If you visit the page, make sure you click Like and Follow to ensure you keep seeing all the updates.

See you in 2022!
The Neutrog Team

Our Partners

Over the years Neutrog has collaborated with many plant societies that have trialled and subsequently endorsed some of our products. These product endorsements provide retail staff and home gardeners with the confidence to use and recommend Neutrog products.

With a combined membership base of over 10,000, some of these endorsing societies include (click on a logo to head to their website):



and The Orchid Club of South Australia.

We never have enough room in our newsletters to share all of our inspirational stories and tips from our gardening community, but they do appear on our Facebook and Instagram pages regularly...why not join us there?

