

The Pooh Bah Times

NEUTROG'S SEPTEMBER 2019 NEWSLETTER

Hello to our Pooh Bah members and welcome to our September newsletter.

Spring is in the air, and this week it's finally here! It's the time when we uncurl ourselves from the couch and head outdoors to feel the gentle warmth of the sun on our faces. It's one of the most wonderful times of the year in the garden, with extended daylight and warmer temperatures, fresh buds blooming and the earth seeming to come to life again. Farmers and gardeners plant their seeds, and after the cold and gloomy winter, the sunshine is a welcome change.



Now is the time to order summer-flowering bulbs and seeds, tidy up flower beds, add new plants to your garden and seek and destroy any pesky pests. It's an ideal time to prune shrubs, low hanging trees and perennials which will be growing quickly and may need a bit of shaping (be careful not to remove any flowering buds though, as you'll be disappointed later in the season when you don't get as many flowers). It's also time to prune any plants that flowered over autumn and winter.

Most importantly, it's time to fertilise. Plants slow down over winter because of the colder weather and don't need as many nutrients, but in spring everything gets going again, and because the plants are growing much faster, they need to take up more nutrients from the soil. If your soil doesn't have anything for them to feed on, they will go hungry and not perform at their best. To make it easier for you, our year-round fertilising programme at the end of this newsletter outlines which fertiliser is best for which plant type.

We always look forward to connecting with you about what's happening in our garden world, and we love receiving your feedback, so please don't hesitate to send us an email or comment on our social media pages.

Additionally, if you have any garden pics to share, send them through to marketing@neutrog.com.au, and we can share them with everyone. We trust you enjoy our newsletter.

Happy gardening,
The Neutrog team.



If you have any garden pics to share, send them through to marketing@neutrog.com.au, and we can share them with everyone.

Coming up

- Growing great veggies
- Craig Castree
- This month in the Rare Fruit Arboretum
- Around the Grounds - Helen's new car
- Seamungus & Root Development
- Eryldene House & Garden
- The Biological Approach - Diversity & Ethos in the Soil
- Research and Development - Trichoderma strains harvested
- What's Brewing at Neutrog
- International Update - South Africa
- Featured product - Sudden Impact for Roses
- The Expert's Choice
- Year-Round Fertilising Programme

We like to share stories and tips from our fellow gardeners. Each month we have so many interesting stories we don't have enough space for here, so they will appear on our Facebook feed and Instagram page over the coming weeks. Why not join us there?



Growing great veggies



Wondering how to grow cauliflower this large? With Neutrog's Gyganic for Veggies, Fruit & Citrus and GOGO Juice of course!

Basket Range Farm in SA has been operating a veggie patch for the local community for several years, and recently changed fertiliser to Neutrog's Gyganic and GOGO Juice.

"We're lucky to have excellent soil, so I didn't expect to see much difference in the produce, however since making the change to Gyganic and GOGO Juice, all of our brassica's have been enormous, with this one weighing in at 12.5kg. It was too big for my family to eat on its own, so it was made into cauliflower soup, cauliflower rice, roast cauliflower and well as curry, and fed all the neighbours" said Felicity from Basket Range Farm.



If you've got some spare room in your veggie garden it's time to plant potatoes. The humble spud is not only good for stews, chips and potato salad, but did you know it also removes rust, soothes burns, removes stains, cleans silverware and is a good rescue for salty soup! It's best to grow potatoes from specially grown seed potatoes (the potatoes you buy in the supermarket may have been treated with a sprout inhibitor to prevent them from sprouting in your pantry).

For best results, when planting your potatoes, remember to mix some Seamungus into the soil, and apply again about 4 weeks later. The seaweed component in Seamungus will help them germinate. Once they've been in the ground for a couple of months and have started to sprout, give them a top dressing of Gyganic for Veggies, Fruit & Citrus, and water in with GOGO Juice - then watch them grow!



Craig Castree

Craig Castree is a qualified horticulturist, an author, bee keeper and manager of the Werribee Park Heritage Orchard in Victoria. As a veggie garden consultant, Craig also shows people how to turn their gardens into beautiful and productive spaces that produce delicious organic fruit and vegetables.

Craig's motto used to be *'If I can't eat it, I won't grow it'*, but that has since changed to *'If it doesn't serve a purpose, I won't grow it'*. As Craig has a bee hive in his backyard, he can't afford to spray chemicals, so he has to rely on veggies, herbs and flowers to do some of the hard work for him, and uses the principle *'what goes well on the plate together goes well in the ground together'* – for example, tomatoes, basil and garlic.

Craig determines where he wants to plant tomatoes in October/November, and then plants a ring of garlic cloves in that spot beforehand in March/April. He then plants some basil next to the garlic and tomato. This combination helps ward off pests.

Additionally, Craig never plants tomatoes together as they compete with each other for food, water and light, and if one plant gets a disease, they all get it. He finds that he rarely has to rotate crops using this method, his yields are higher and the ecosystem in his backyard looks after itself.



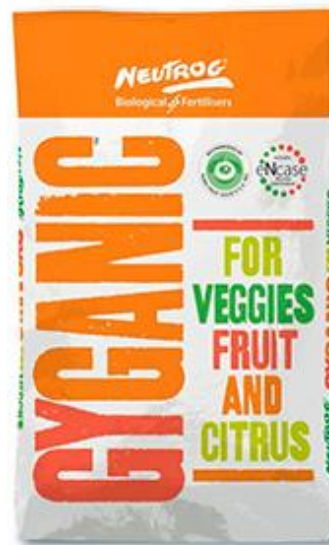
Craig has just started using our supermulch Whoflungdung. *"I love it"* says Craig. *"It looks great and I am seeing some early results with a lot more composting insect activity in the soil. I'm now a convert from sugar cane mulch to Whoflungdung, and will need to get a few more bales this spring"*.

About Whoflungdung - Whoflungdung is a biologically activated, nutrient rich, weed free, absorbent, super mulch. It's composted, inoculated with eNcase and filled with nutrients, so that when added to soil it introduces a wide diversity of beneficial bacteria. These beneficial bacteria readily proliferate through the soil, acting as a barrier/deterrent to pathogenic bacteria, providing a safe environment for healthy plant growth.

Additionally, Whoflungdung is sustainable - it is a recycled waste product, made up of straw and wood shavings screened from chicken manure. In many instances Neutrog supplies the fertiliser that grows the crop from which the straw is sourced. Now that is sustainability.

Most significantly, Whoflungdung reduces, if not eliminates, the nitrogen draw-down which is often reflected in plants after mulch has been applied. Apart from reducing weeds, many users also happily report that blackbirds don't like it. Here is a list of Whoflungdung stockists: <http://www.neutrog.com.au/whoflungdung-retail-stockists/>

Craig's book 'Edible Gardens' is available from his website here: <https://ediblegarden.webs.com/>



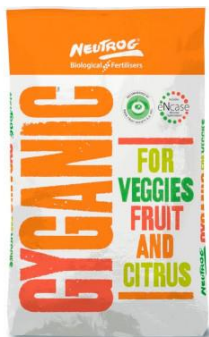
The No. 1 Food for Veggies, Fruit & Citrus



This month in the Rare Fruit Arboretum

We've been busy spreading Whoflungdung throughout the arboretum during winter, and will follow up soon with a spring feed of Gyganic for Veggies, Fruit & Citrus, watered in with GOGO Juice.

About 25 members of the Rare Fruit Society of South Australia came in August to prune all of the fruit trees and do some weeding. It was a great experience for the members who hadn't yet visited the arboretum, who were shown different pruning techniques by some of the more experienced members. The next job on the list is to plant about 12 different varieties which have already been grafted onto rootstock.



About the Rare Fruit Arboretum - the establishment of the Rare Fruit Arboretum at Neutrog's Kanmantoo site is a joint venture between Neutrog and the Rare Fruit Society of South Australia. More than 300 rare and endangered fruit trees have been planted, including apples, pears, peaches, nectarines, figs and quinces.

Along with helping to ensure their preservation, Neutrog uses the trees to carry out fertiliser and biological application performance trials, as well as researching the microbiology in and around the root zone of each species, and determining their optimum nutritional and biological needs. One such product used in the Arboretum is Gyganic for Veggies, Fruit & Citrus, which was developed in conjunction with the Rare Fruit Society.

Around the Grounds Helen's new car!

If you're in Victoria and happen to see this rose-covered car, the driver will be our gorgeous Victorian retail rep Helen Lovel.

Many of you would know Helen from attending garden club talks and other gardening presentations in Victoria, so give her a toot and a wave!



Seamungus & Root Development



A Neutrog staff member recently did a trial on Seamungus liquid.

Two daisy cuttings were placed in identical glasses of tap water, with a few drops of Seamungus liquid applied to one of the glasses. 21 days later, look at the root development from the Seamungus dilution compared to the one without!

This is one of the reasons we recommend using Seamungus as a plant tonic and planting food as it encourages root growth. Having a healthy root system and a larger root surface means that plants are more able to take nutrients from the soil, thereby resulting in a healthier plant, which leads to better disease resistance and better flowering.

About Seamungus – Seamungus is a soil and plant conditioner, manufactured by combining the very best of composted raw materials – seaweed, fish, humic acid and manure. It is also a health tonic and planting food for all plants including natives, lawns and bare-rooted roses.

It undergoes a unique composting process, specifically developed to stabilise the nutrients, maximise nutrient availability and to ensure the product is free of any parasites, pathogens and weed seeds. Most importantly, the resultant product retains the microbiology necessary for a 'living' product.

Whilst Seamungus contains a wide range and good levels of plant nutrients, it is perhaps the additional unique properties contained within seaweed that provide the catalyst for providing higher yields of sustained quality. Seamungus will help your plants resist heat, drought and frost, along with pests and disease.

Results after 21 days



Results after 33 days



Above is a progress report after 33 days. Not only do the roots in tap water look brittle (*left*), but they are also very undeveloped compared to the roots soaked in Seamungus (*right*).

Eryldene House & Garden

'Eryldene' is the heritage listed house and garden located at Gordon in NSW, which is the former home of the late Professor E.G. Waterhouse and his family.

Eben Gowrie Waterhouse was born in Sydney in 1881, and in his eighties began learning the Japanese language, becoming sufficiently proficient to 'talk camellias' with Japanese experts. Over the years he undertook research into the camellia, resulting in it regaining popularity in Australia, and bringing him international acclaim and respect. He co-founded the Australian and New Zealand Camellia Research Society and wrote two books on camellias. He also founded the well-known Camellia Grove Nursery at St Ives in 1939 and was a member of the board of the International Camellia Society for many years. Waterhouse died in 1977 at 96 years of age.

Helen Wallace is Chair of the Eryldene Garden Council. *"The camellias in the garden at Eryldene are showing their appreciation of the Kahoona, Seamungus and GOGO Juice with which they have been treated"* said Helen. *"Their colours are brighter and the leaves are glossier. This is an old garden (it was created in 1914), and many of the older camellias seem to be rejuvenated. Visitors to the garden have commented on how good the camellias look".*

About Kahoona – Kahoona is an organic based, chemically boosted fertiliser, specifically developed to enhance the growth and flower development of acid loving plants such as camellias, gardenias, azaleas, rhododendrons and fuchsias.

The higher potassium to nitrogen ratio within Kahoona plays a crucial role in enhancing flower development, whilst the boosted levels of iron and magnesium help maintain healthy green foliage, aiding in preventing the yellowing leaves which are often seen in late winter and early spring.

Following successful trials, Kahoona has been endorsed by Camellias South Australia, the Australian Rhododendron Society (SA Branch), the Camellia Society of WA, Camellias Illawarra and the NSW Camellia Research Society. These endorsements provide confidence to use and recommend Kahoona.



Eryldene is open on the second weekend of each month from April to September between 10am and 4pm. No bookings are required except for Special Sunday Afternoon Teas. For more information visit the Eryldene website <https://www.eryldene.org.au>.

Eryldene is also available to hire for special events such as group tours, garden parties, garden weddings and photography shoots at other times during the year.



Above: Professor Eben Gowrie Waterhouse

The Biological Approach

Diversity & Ethos in the Soil



From the desk of Neutrog's
resident microbiologist
Dr. Uwe Stroehler

Many gardeners are aware of the benefits of having a diverse soil microbiology, but in recent years more of the large biotech and plant breeding companies are seeing the benefits of using soil microbes to improve production - we've essentially been doing this for years at Neutrog. After speaking at countless garden clubs and other events, people are always surprised how critical these microbes are to a happy and healthy garden. Our approach at Neutrog has always been different to what some of the bigger companies do in the field of soil biologics - we use a holistic approach; in that we believe that you need a variety of microbes to get the best results.

A number of companies use soil microbial additives - most of these contain only a limited number of microbes, which may not be suitable for all soil types or even different plant species. A number of studies using a selected subset of bacterial or fungal species have shown that these have only limited effectiveness, and many of the inoculants disappear within a short period of time.

A recent report by Monsanto and Novazyme who are major players in the field effectively said "*bigger benefits may come from sets of microbes working together*" so with thousands of microbes, how do you work out the best combination? It's virtually impossible. These companies have tested thousands of microbes in over 500,000 plots and have come to the same conclusion we have always spoken about - diversity in soil microbes can't be beaten, and is likely to be our best option to improve plant health and yield. With these findings, companies like Monsanto, Bayer, Syngenta and BASF are now working on microbes because they believe they have the potential to reduce the requirement on chemicals, and allow us to live more sustainably.

So, this really reinforces and underpins the ethos Neutrog have always had. This is why we manufacture and sell products such as GOGO Juice, which contain thousands of different microbial species, of which some will survive and thrive in the conditions of your garden.

We believe it is only logical that having diversity in your soil not only gives you the best chance of success, but also gives you an ecosystem which is more robust to change.

The principle behind how Neutrog products function is slowly being embraced by even the biggest players in the agricultural and horticultural field, so whether you're using GOGO Juice or any of our pelleted products, you can be assured that you get that diversity. It's even in our supermulch Whoflungdung.



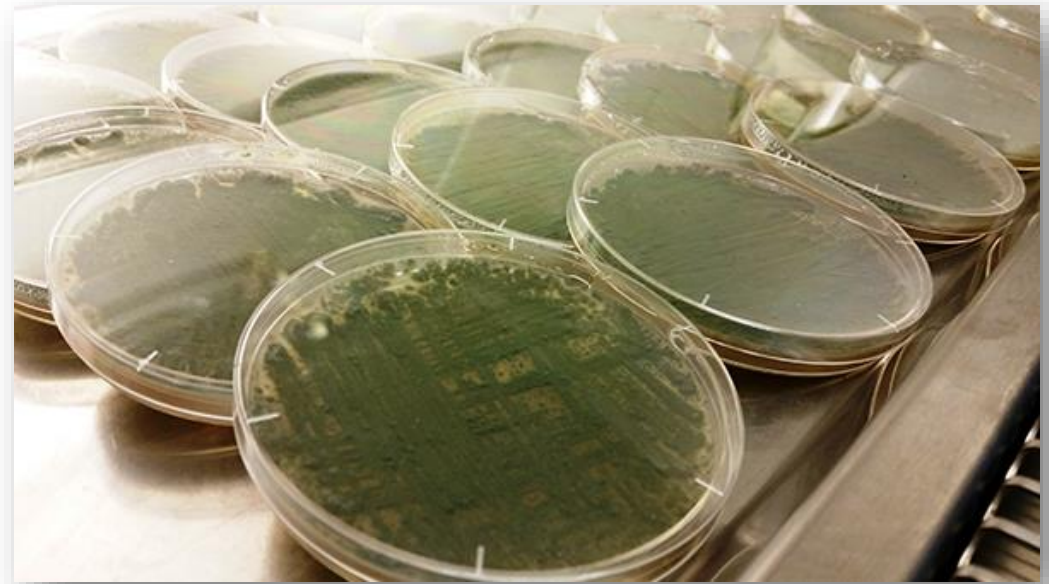
Research & Development

Trichoderma strains harvested

Neutrog's R&D Manager, microbiologist Dr Uwe Stroehler has been busy in his laboratory growing and harvesting a number of differing strains of Trichoderma.

Trichoderma is a fungus of which various species have been under the spotlight for their ability to act as a biological control agent - these fungi have been shown to be able to compete well within various soil types and keep out undesirable fungi and some bacterial plant pathogens. Trichoderma work in a number of ways - firstly they take up the space which could otherwise be occupied by pathogenic bacteria, which is akin to how a healthy lawn keeps out weeds. In this situation, the Trichoderma form a mutualistic relationship with the plant root system, keeping the pathogen at bay.

Secondly, another way in which the Trichoderma may control other fungi is that they parasitise them, basically destroying pathogenic fungal types. A third way is that the Trichoderma produce compounds which can inhibit the growth of a competing organism. There is also good evidence showing that Trichoderma can induce the plant's own defence mechanisms.



The mechanism by which Trichoderma can control pathogens and enhance the plant's survival are multifaceted, but even with this arsenal, a single strain or species will not be effective against all pathogens, or for that matter be suitable for (or survive in) all soil types and situations. As with most biological systems, a greater diversity of species and strains of Trichoderma are more likely to provide a positive result over a broader application.

We are currently in the process of isolating and testing a range of Trichoderma species to check their ability to compete against a range of pathogens, in particular major fungal species such as Rhizoctonia and Sclerotinia, and the parasitic oomycote Pythium which is a major plant pathogen - this is being carried out as part of a wider collaboration research project we have recently established with Professor Brajesh Singh and the Western Sydney University. We will soon have more to report on this project as it is now well underway.



L to R: Professor Brajesh Singh, Managing Director Angus Irwin and Microbiologist Dr. Uwe Stroehler

What's brewing at Neutrog

New warehouse & manure pad

There has certainly been plenty of site development activity at Neutrog over the past few months - whilst our 2000 square metre finished goods warehouse and our 100,000 litre liquid storage warehouse continue to progress rapidly towards completion, it has been our wider site development that has been our focus of late.

With a great deal of help from our friends next door, Hillgrove, we have moved nearly 100,000 m³ of dirt, and have spread 35,000 tonnes of clay and limestone to create a raw material area which now occupies half of the total 50,000 square metre area available.



International Update

South Africa

[Abalimi Bezekhaya & Harvest of Hope](#) is a non-profit organisation in South Africa working to empower the disadvantaged through urban agriculture and environmental programmes. It operates in the socially and economically neglected townships of Khayelitsha, Nyanga and the surrounding areas on the Cape Flats near Cape Town. Abalimi Bezekhaya means “*the planters of the home*” in Xhosa, which is the native language of the community Abalimi assists.

Abalimi's aim is to provide a means of basic survival and long-term sustainability to these communities, but to also encourage a healthy organic lifestyle. Through Abalimi's experience it can be seen that organic group gardening facilitates community building and helps the individual's personal growth and self-esteem.

In the past, Neutrog donated around 24 tons of fertiliser a year, and with our re-entry into the South African market, we are re-engaging the sponsorship. Charles Bertram from Neutrog South Africa popped out to the Nyanga garden and had a chat to Mama Bakolo (*pictured right*), who has been in charge of the market garden since 2005. She is growing a mix of vegetables including cabbage, spinach, carrots, kale and asparagus.

Due to the sandy nature of the soil, Mama Bakolo said it was necessary to dig in compost and then apply Bounce Back at around 100 grams per square metre for best results. They have recently sunk a well, as they had been relying on municipal water.

The vegetables are currently distributed to hotels and restaurants, with a smaller portion going through to the public market. Mama Bakolo said that the biggest challenge was the distribution, as there is a demand for vegetables in the retail market, but the conundrum is how to reach the market - currently they have collection points in the suburbs.



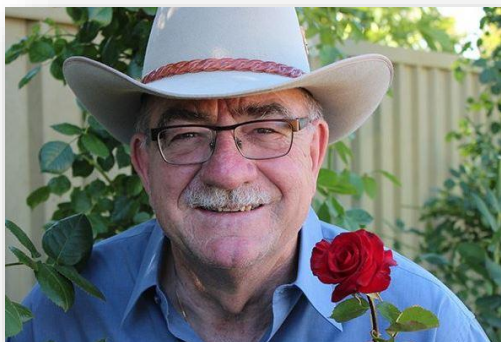
Mama Bakolo has also created an information garden - specifically how to create healthy soils in the sandy soils of the Cape Flats. One of the biggest challenges is ensuring that there is enough organic material in the soil, and they have overcome this in the past by utilising compost and Bounce Back in tandem. Neutrog is very proud to be re-engaging with Abalimi.

Featured product

Sudden Impact for Roses

Beginning its life in 1996 as a specialist commercial fertiliser (initially simply called Virginia Mix) for growing potatoes and onions in the Adelaide Plains, Neutrog was approached by Rose Society of South Australia member Mr Kelvin Trimper who had trialled the original potato product on his own roses, to ascertain our interest in making some subtle changes to the product formula.

Over the next 3 years numerous trials of various formulas were undertaken with members of the South Australian Rose Society along were carried out involving in excess of 20,000kgs of product...enough to feed 200,000 roses!



Left: Mr. Kelvin Trimper

Right: Roses at Flemington Racecourse.



The resultant product combined the best of both worlds—its organic base provided a full range of plant nutrients in a slow release form, whilst boosted levels of water-soluble nutrients such as potassium, iron and magnesium, optimised the performance of each application. It contained all the nutrients required to grow roses and no other nutrient supplements or applications were required. Most significantly the ratio of potassium to nitrogen was such that it made the product formula ideal for application on all flowering plants, not just roses.

In 2000 this product was named Sudden Impact for Roses. It was endorsed by the South Australian Rose Society in 2001, and was subsequently launched in the same year at the Adelaide Botanic Gardens.

Sudden Impact for Roses has since been endorsed by nearly every Rose Society/Group around Australia and numerous others overseas. It is also used by most major rose gardens around Australia including Flemington Racecourse Rose Garden, Morwell Rose Garden, Mornington Rose Garden, International Rose Garden, Araluen etc.

To put it all into some perspective, last year in excess of 15,000,000 roses were fed with Sudden Impact for Roses.



Pooh Bah Club t-shirts now available!



If you're an avid Pooh Bah Club member and want to shout it from the rooftops, why not do it with a Pooh Bah Club t-shirt?

Available in black and white in sizes from S to XXL, they are available from our online store for \$18.95 each at [Neutrog's online store](http://www.neutrog.com.au).

Visit our Online Store for
Trial Packs, Sample Packs
and 'From the Ground Up' books
[Click here to visit our Online Store](http://www.neutrog.com.au)
www.neutrog.com.au



The Expert's Choice

Over the years Neutrog has collaborated with many plant societies that have trialled and subsequently endorsed some of our products. These product endorsements provide retail staff and home gardeners with the confidence to use and recommend Neutrog products.

With a combined membership base of over 10,000, some of these endorsing societies include the Rose Society of South Australia, The Orchid Club of South Australia, the Orchid Society of Western Australia, the Rare Fruit Society of South Australia, Camellias South Australia, Camellias Illawarra, the Cymbidium Orchid Club of SA, the Cymbidium Club of Australia, the Cymbidium Orchid Society of Victoria, the Cymbidium Orchid Club of WA, the Australian Rhododendron Society (SA branch), the South West Rose Society, the National Rose Society of Australia, Heritage Roses in Australia, the Rose Society of WA, the Rose Society of NSW, the Rose Society of Victoria, the Queensland Rose Society and the Australian Plants Society of Victoria.

Neutrog Radio

[Listen to Dr. Uwe](#) as he dishes the dirt on gardening and soil microbiology on 2GB and FIVEaa.



Year-Round Fertilising Programme

Spring
has arrived!



Year round fertilising for year round health

Like humans and animals, plants require regular feeding throughout the year – at least once in each season.

Happy, healthy, well nourished plants are more resistant to pests, diseases, heat stress and frost.

Spring has arrived! For a gardener it's one of the most wonderful times of the year – the weather is getting warmer, the garden is waking up and it's time to plant, prune, prepare beds and care for your lawn. It's also time to feed all of your plants - particularly hungry fruits and veggies, lawns, roses and flowering plants. After feeding your garden (with Neutrog of course!), mulch your garden beds with Whoflungdung to keep down weeds and to protect the soil during summer by regulating soil temperature.

The plants in our garden are just like animals and humans - they grow best when they are well nourished and fed regularly. Happy healthy plants don't get sick and are less likely to be affected by pests or diseases, which is going to make you a much happier gardener too!



No. 1 garden tip for spring

Apply GOGO Juice monthly to help increase the microbial population in your soil, and make more nutrients available to plants. This, in turn, increases their ability to resist pests and disease, and to withstand and/or recover from heat stress and frost.

GOGO Juice is literally teeming with beneficial micro-biology and is essentially a pro-biotic for your soil and plants. GOGO Juice combines the “catalytic” power of providing a wide diversity of beneficial bacteria and fungi with the well documented benefits of applying kelp and humates.

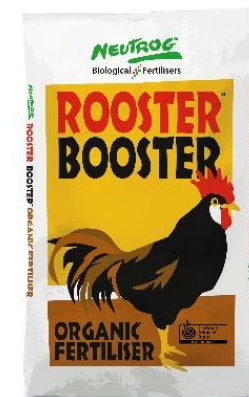


Planting – all situations

Spring is the perfect time for planting!

Use Seamungus, Rapid Raiser or Rooster Booster for any new plantings. Make sure the hole is at least twice the size of the root ball. Throw some pellets into the hole and mix through the soil - it will give the plant a gentle nutrient boost.

Seamungus, Rapid Raiser and Rooster Booster are all certified organic by the ACO.



Flowering plants

Including roses, carnations, daisies, lavender and all other flowering plants

Feed your roses and all other flowering plants (except natives) with Sudden Impact for Roses. The higher nitrogen to potassium ratio makes Sudden Impact for Roses ideal for all flowering plants, not just roses.

Water in with GOGO Juice to encourage a faster uptake of the nutrients by the plant, and to populate and activate the microbes in the soil.

If any plants are looking a bit yellow or stunted after winter, give them a drink of Sudden Impact for Roses Liquid - it will give them a kickstart.

The time in spring to feed your roses is when the first burst of warm weather comes and the roses are showing their first new season's growth - ideally when the shoots are 2 to 3cm in length. Keep an eye on them though - as they burst into bloom, they will become very attractive to aphids which can congregate on the buds and distort their growth.



Potted flowering plants

Including orchids and any flowering plants in pots

Sprinkle Strike Back for Orchids over any potted colour now, and you'll be rewarded with cascades of colour over spring and summer.

Strike Back for Orchids has as an NPK ratio of approx 8:3:10 and has added magnesium, iron, manganese, zinc, copper, boron and molybdenum to the existing range of nutrients provided by its organic base – all of which are particularly necessary for flowering plants in pots, as most potting mixes are generally lacking nutrients that are required by plants to flower.

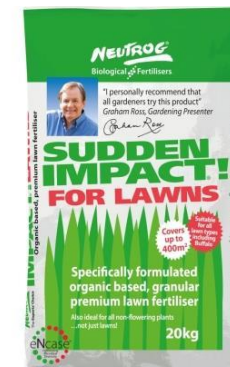


Non-flowering plants

Including lawns, hedges, bamboo, herbs, leafy green veggies and ferns

Fertilise your lawns and non-flowering plants with Sudden Impact for Lawns now. The balance and ratio of nutrients in Sudden Impact for Lawns combined with the very best of raw materials are the secret to the success of Sudden Impact for Lawns – the ratio of nitrogen and potassium is ideal for promoting growth, and more specifically the levels of iron and magnesium have been boosted. These particular elements play a crucial role in the formation of chlorophyll, which is the substance that makes green plants green.

When feeding your lawn, remember to apply it according to the recommended rates on the bag - if you over-fertilise in spring, you'll pay for it in summer because the fast growth will have you mowing the lawn far more than necessary. Regularly trim your hedge during spring - now that the weather is warming up, it will be growing strongly and will quickly get out of shape if left to its own devices.



Acid Loving Plants

Including camellias, gardenias, rhododendrons, azaleas and blueberries

Now is the time to feed camellias and daphne with Kahoona, as they are either in bud or coming into bud. The higher potassium to nitrogen ratio within Kahoona plays a crucial role in enhancing flower development, whilst the boosted levels of iron and magnesium help maintain healthy green foliage, aiding in preventing the yellowing leaves which are often seen in late winter and early spring.

After being fabulous show-offs (some well into spring) camellias now require a good tidy up. When flowering has finished, dead-head and apply Kahoona around the drip zone to encourage the new season's growth. If planted in a pot, sprinkle Kahoona around the outer edge. Avoid the foliage and water in well.



Natives

Including phosphorous-sensitive natives such as grevilleas, banksias & proteas

Native plants will take off beautifully if planted now. It's also a good time to feed established native plants with Bush Tucker - ideal for even the most phosphorus-sensitive plants such as grevilleas, banksias and proteas.



"Whilst native plants are great survivors in the garden, regular feeding helps them to thrive and reach their full potential. The benefits of doing so are not only enjoyed by yourself, by insects, bees and birds, but perhaps more importantly, the environment benefits – the greater the plant growth, the more carbon is captured".

– Angus Stewart, native plant expert.

Mulching

After dealing with any weeds that may have sprung up over winter, give your garden an insulating layer of Whoflungdung. For added benefit, place a layer of newspaper over the soil before the mulch as this will smother any existing weeds and prevent any seeds from sprouting. Any garden looks so much better once it has been freshly mulched - especially with Whoflungdung. If you have roses, the best time to mulch is after they've been pruned, as it is easier to move between the rose bushes without damaging the fragile young shoots.

Whoflungdung not only introduces a wide diversity of beneficial bacteria which act as a deterrent to pathogenic bacteria, it aids in weed suppression, regulates soil temperature, encourages earthworms that aerate the soil and move nutrients deeper in the soil profile. Whoflungdung also reduces, if not eliminates nitrogen drawdown, it adds organic material to the soil, improves water and nutrient-holding capacity, prevents erosion from heavy rain and improves water absorbency.

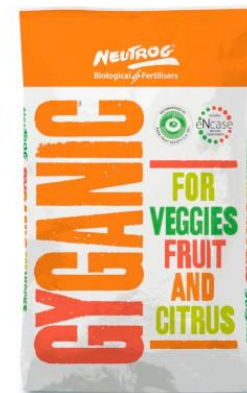


Veggies, Fruit & Citrus

To give your veggies, citrus and other fruiting trees a boost of nutrients, now is the time to feed with Gyganic for Veggies, Fruit & Citrus. It contains all of the nutrients they need to encourage flowering and fruiting. New growth is forming and it needs to be fed.

Gyganic is a nutritious, biological, organic base, high in organic carbon and containing naturally-occurring growth hormones. It has been specifically developed to enhance uniform size and quality fruit, flower and vegetable production. It's an organic-based, biological, chemically boosted complete fertiliser with the full range of nutrients in an organic form, coupled with chemically boosted levels of nitrogen, phosphorus, potassium, iron and magnesium.

Citrus are very heavy feeders, and if you give them what they want when they want it, then they'll amply reward you for years. Prune lemon trees now so that they retain their shape - try not to let them get too tall as it will make picking the lemons very tricky.



Soil Conditioning

GOGO Juice provides a huge boost of the living microbiology necessary for your soil and plants to perform at their optimum level, increasing their ability to resist pests and disease, and to withstand heat and frost stress. The microbiology in GOGO Juice promotes plant growth as well as stimulating and improving root growth and development.



NEUTROG
Biological Fertilisers

Copyright © 2019 NeutroG
Australia, All Rights Reserved